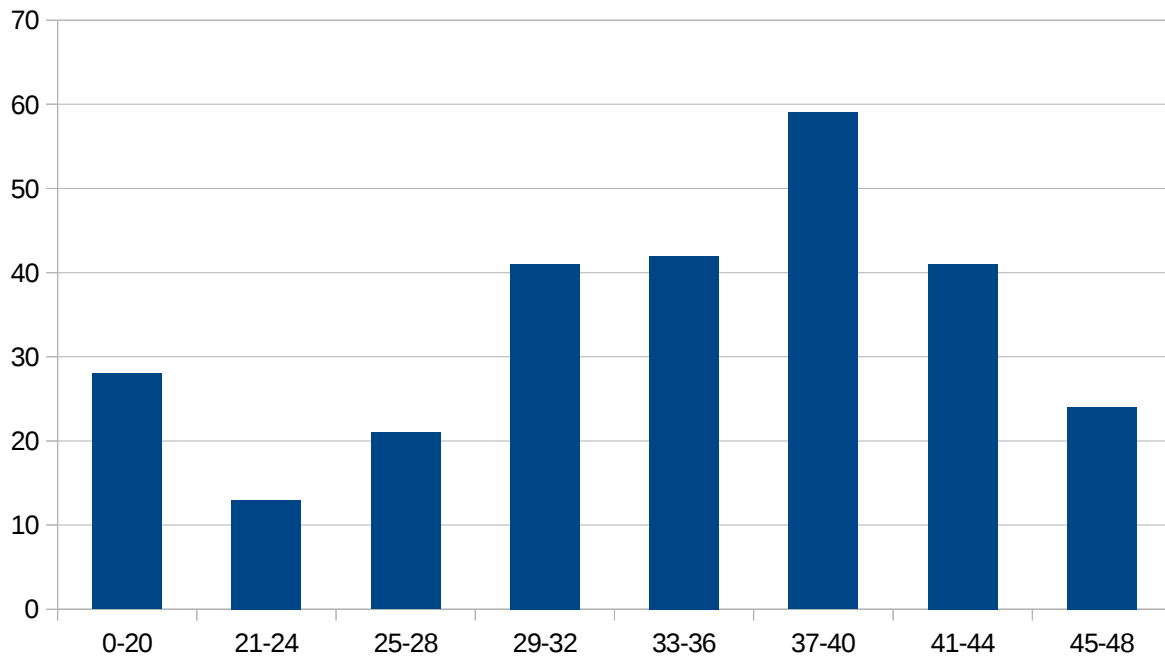


CS103 Final Exam Solutions

Here's the grade distribution for the CS103 final exam:



Because exam scores don't follow a normal distribution, we've found that the mean and standard deviation are not particularly good measures of your overall performance on the exam. Instead, we recommend looking at the exam quartiles and getting a rough sense of your performance:

75th Percentile: 40 / 48 (83%)

50th Percentile: 35.5 / 48 (74%)

25th Percentile: 29 / 48 (60%)

The solutions in this handout are just one possible set of solutions and represent the cleanest answers that we could think of. Don't worry if your answers don't match what we have here or are more complex than our answers – we had a week to clean up and polish these answers.

If you would like to submit a regrade request, please drop your exam off at Keith's office by the end of the first week of class in Winter 2016 with a note indicating which problems you'd like us to regrade.