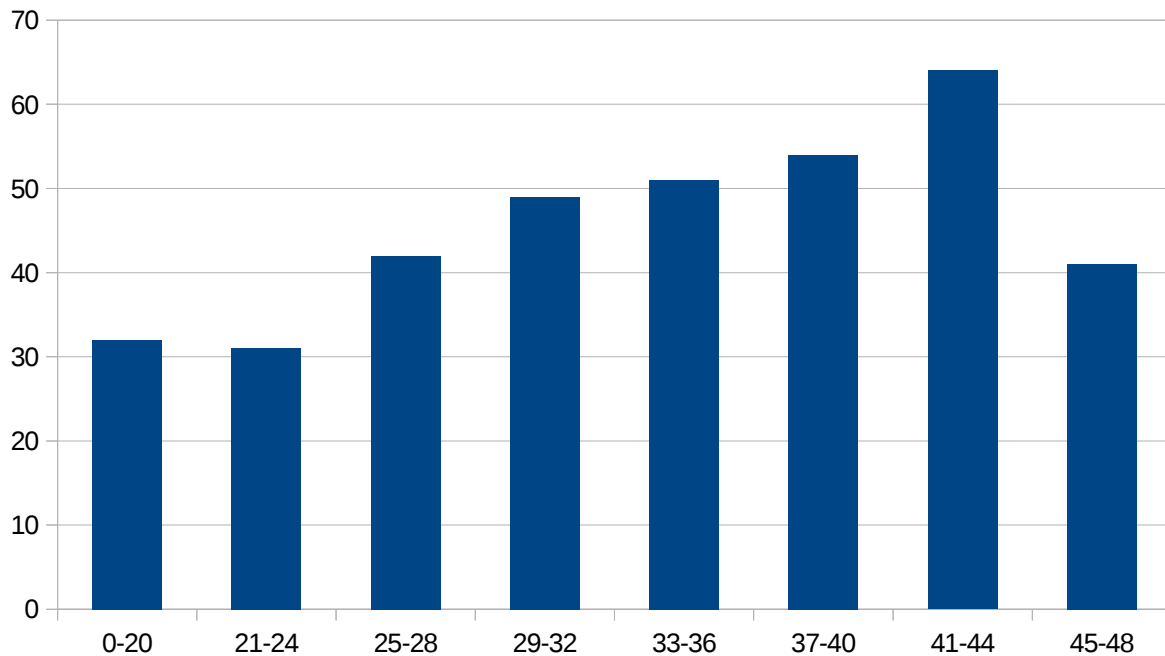


CS103 Final Exam Score Distribution

Here's the score distribution for the CS103 final exam:



Because exam scores don't follow a normal distribution, we've found that the mean and standard deviation are not particularly good measures of your overall performance on the exam. Instead, we recommend looking at the exam quartiles to get a rough sense of your performance:

75th Percentile: 41 / 48 (85%)

50th Percentile: 35 / 48 (73%)

25th Percentile: 27 / 48 (56%)

If you would like to submit a regrade request, please drop your exam off at Keith's office by the end of the first week of class in Spring 2016 with a note indicating which problems you'd like us to re-grade.