



Accenture Applied Intelligence

**INDUSTRIAL AI SERIES (EE392B)**

# AI IN SUPPLY CHAIN OPS

APRIL 2021



---

# INTRODUCTION



**Colin Kessinger**  
**Accenture Applied Intelligence**



---

# AGENDA FOR TODAY

- Introductions
  - Colin Kessinger
  - Accenture
  - Jim Miller
  - Paritosh Desai
- Class Topic: Industrial AI Big Picture
  - Hiring
  - Outcomes
- Explainability, Usability, and Adoption
  - Digital Twins
  - Primary Challenges to Successful AI programs



# Accenture at-a-glance

**Global**  
Delivery Network

**\$44bn rev**

4% growth  
in local currency

**\$1.7bn**

Investment on  
R&D and Training

**91**

Of the Global  
Fortune 100 are  
Accenture clients

**506,000**

Employees

**16**

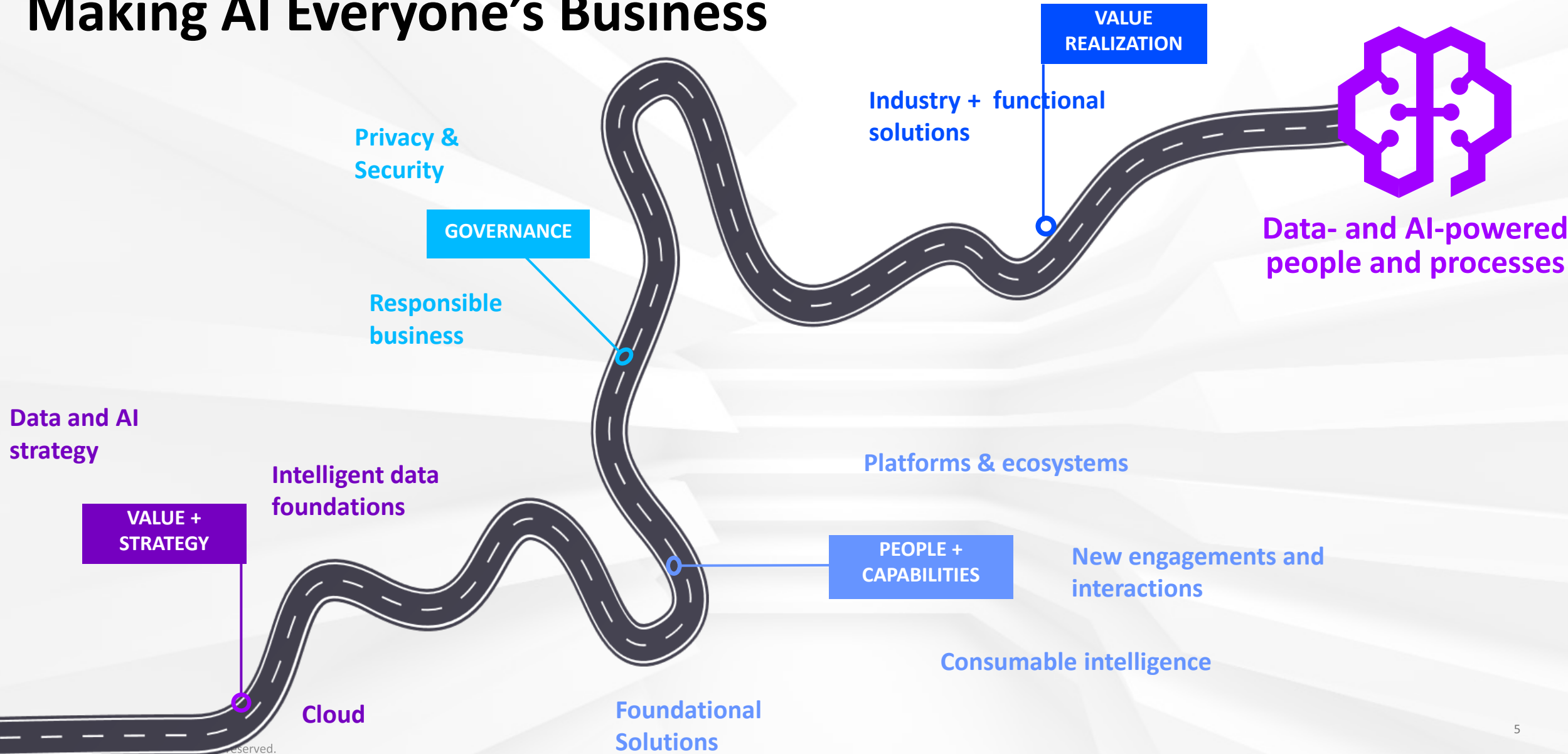
Major Industry  
Segments

**51**

Countries  
operating in

# ACCENTURE APPLIED INTELLIGENCE

## Making AI Everyone's Business



# APPLIED INTELLIGENCE BY THE NUMBERS

**2000+**  
Patents and  
patent-pending



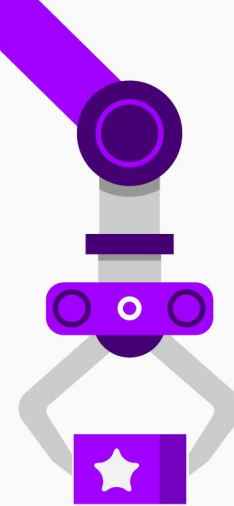
**300+**  
Apps and  
Solutions

Offices and Operations in  
**200+ cities**  
in **51 countries**



**100%**

of leading industry analyst reports  
rank us in their leader category



**84**  
Clients from  
Fortune 100

**\$800M**

Investment in research  
and innovations in FY19

**19+**  
Industries



**225+**  
Technology Alliances

**750**  
Culture Coaches driving positive culture  
that support working in a Truly Human  
way within account teams

**50**  
Dedicated  
Centers



# Intros – Jim Miller

---

## **Chief Technology Officer, Wayfair Advisor and Board Member**

### CTO: Wayfair

- 500 employees consisting of software engineers, product managers, UX/UI design, and data scientists
- functional responsibility for all of the technology and applications that power Wayfair.

### Prior Experience: Multiple

- Chief Executive Officer of Arevo Inc. commercializing and ramping Arevo's continuous carbon fiber 3D deposition technology and fabrication processes.
- Vice President of Operations at Google: global operations, planning, supply chain and new product introduction for Google's Cloud infrastructure and Google Fiber.
- Supply chain leadership roles at Amazon, Cisco, First Solar, Sanmina-SCI Corporation, IBM Corporation, Intel

### Other Roles: Multiple

- Board of Directors
  - ITRenew
  - Brambles Limited
  - The RealReal.
  -
- Other
  - Technical Advisory Network at the Boston Consulting Group.
  - Member of the MIT Corporation.
  - Advisor to multiple early-stage, mid-stage and public companies, venture capital firms, and private equity firms.

# Intros – Paritosh Desai

---

**Senior Director: Google**  
**PhD Operations Research, Stanford**

**Senior Director: Google**

- Ads Quality and Engineering for
  - Discovery Campaigns
    - Gmail Ads
    - Discover Ads

**SVP, Chief Data and Analytics Officer: Target**

- Designed and led a centralized function with capabilities in data engineering, data-science, and AI
- In-sourced critical engineering and AI capabilities (25+ open-source contributors) based upon cloud-computing and microservices

**Senior Director, Data Sciences: Gap Inc Direct**

- Customer Behavior Analytics  
Retail Analytics: inventory allocation, initial order quantities, pricing and promotion optimization,
- Web Analytics: conversion-rate, path analysis, A/B testing, click-stream based behavioral analytics
- Web-scale personalization platform based upon Hadoop, Mahout, R, and Java stack.

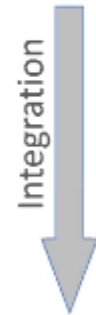


# Class Topic: Industrial AI Big Picture

- **What do companies mean when they hire AI engineers?**
- **Why are companies compelled to do AI?**
- **What is the outcome they expect?**

## Analytics in Industry

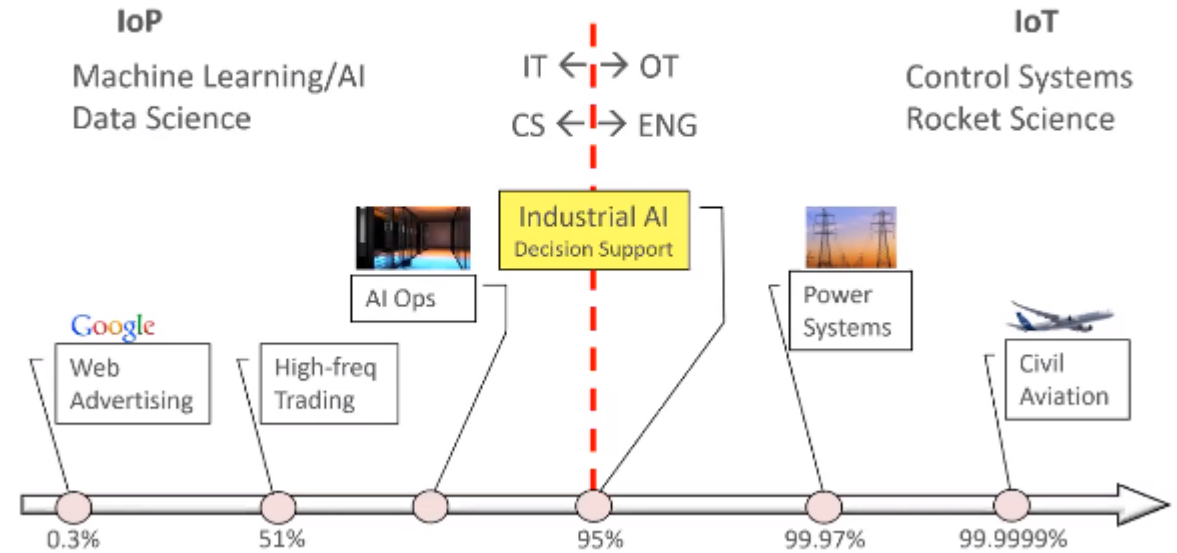
- Business Intelligence (BI)
  - Spreadsheets
- Data Science
  - Exploratory analysis services
- AI
  - Automated applications



# Explainability, Usability, and Adoption

- **When, where, why is explainability important**
- **Digital Twins – where is the value real, where is just buzz words?**
- **What are the real issues associated with the implementation of Industrial AI**
  - Business Challenges
  - Engineering Challenges

## Mission Critical Analytics



## Industrial AI in Digital Transformation

