



M U S E

Turn music into memories.

Hi-Fi Prototype 3

# Our team



**Alema F.**  
*UX Designer*



**Tiffany M.**  
*App Developer*



**Nylah D.**  
*App Developer*



**Vincent N.**  
*UX Designer*

## ROADMAP

Introduction

Interface changes + task flows

Live demo

Future work

# Introduction

**VALUE PROPOSITION:** Turn music into memories.

**PROBLEM:** Current forms of memory-keeping have disadvantages: journaling is time-consuming, and photos only capture visual details.

**SOLUTION:** Muse interweaves music with memories to make looking back on life a delight.





Interface changes + task flows

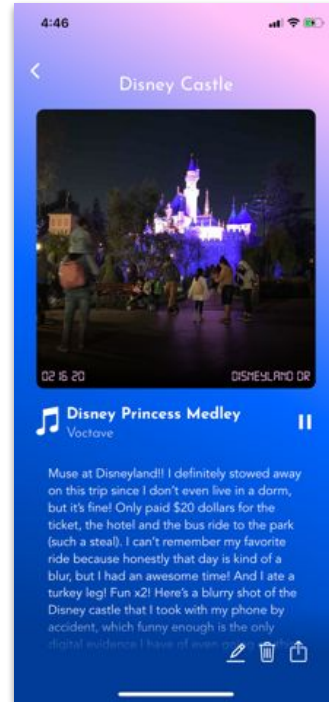
# Viewing a memory

**OBSERVATION:** 8/9 users were confused with how to view the content in a memory because it was obscured in the flip interaction.

**CHANGE:** The screen now displays the cover, song, and memory as separate components to interact with.



# Viewing a memory



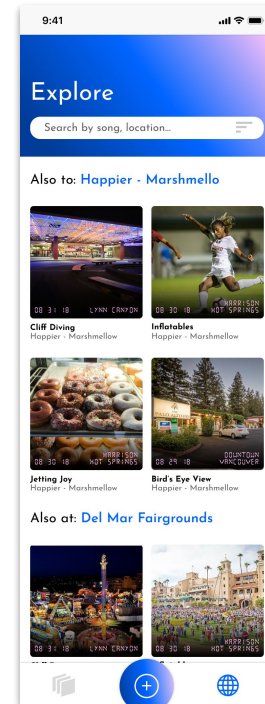
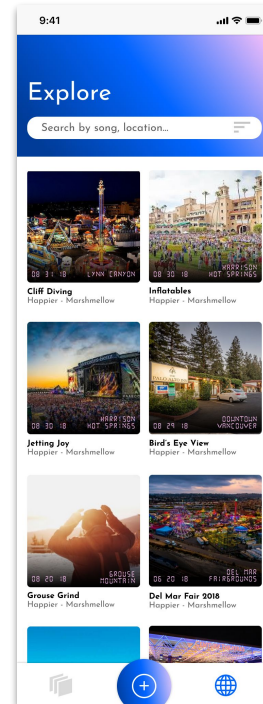
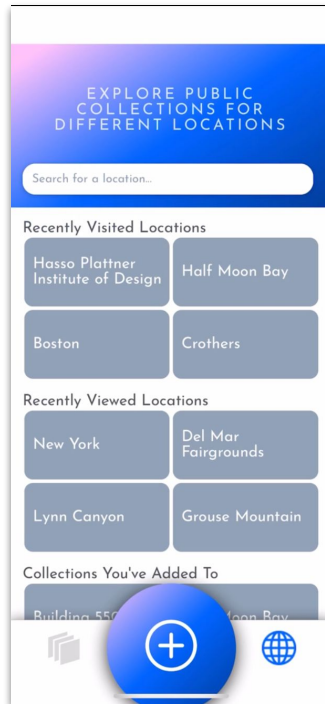
# Explore screen

**OBSERVATION:** 4/9 users didn't know how to interact with the Explore screen because there wasn't enough reason to.

**CHANGE:** The screen is now populated with the 10 most recently shared memories from the global community.



# Explore screen



# Other recent developments

**MUSE PLAYS MUSIC:** The app can now play music! We've changed the user flow for logging in by having users log in with Spotify.

**GENERAL AESTHETIC CHANGES:** We incorporated user/instructor feedback to clean the app.

**ADD A FRIEND:** We added an add a friend feature!





Live demo



Future work

# Things to work on

**THE WHOLE MUSIC THING:** While we can play music, we're unclear if it'll be in a deployable state.

**EXPLORE TAB:** Working to finish the Explore tab completely with some minor transition things.

**PROFILE PICS:** Yes.

**MULTIMEDIA COVERS:** Integrate multimedia (multiple photos, videos) into the albums. *Stretch goal!*





Thanks!

M U S E