

# Decomposing LaTeX Documents from Geometrical and Logical Layout

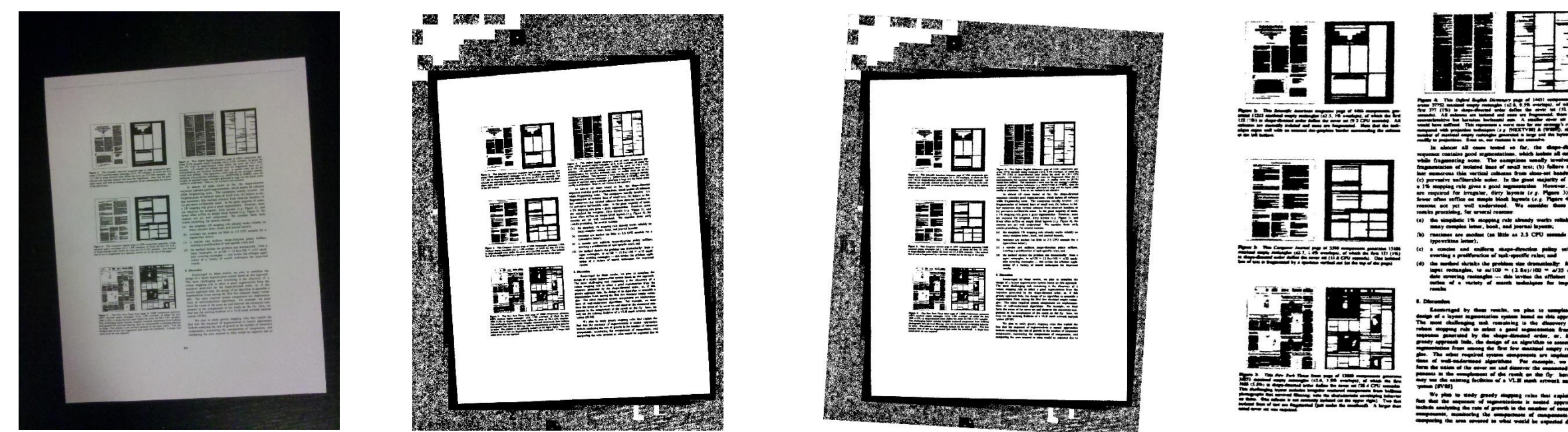
Vincent Deo, Terry Kong, Maisy Wieman  
Department of Electrical Engineering, Stanford University

## Overview

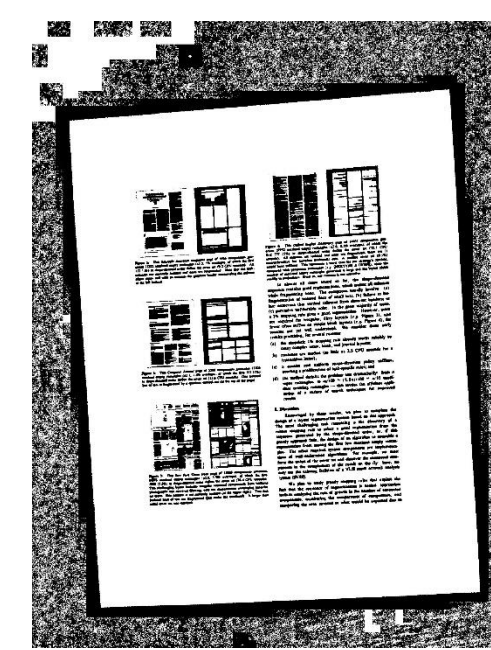
LaTeX is a low-level markup and programming language that produces aesthetically pleasing PDF documents with diverse content. This project aims to analyze the layout of mobile images of LaTeX documents to simplify the generation of LaTeX source code. Input is captured from an Android phone, and the results are computed on a server.

## Methodology

Preprocessing



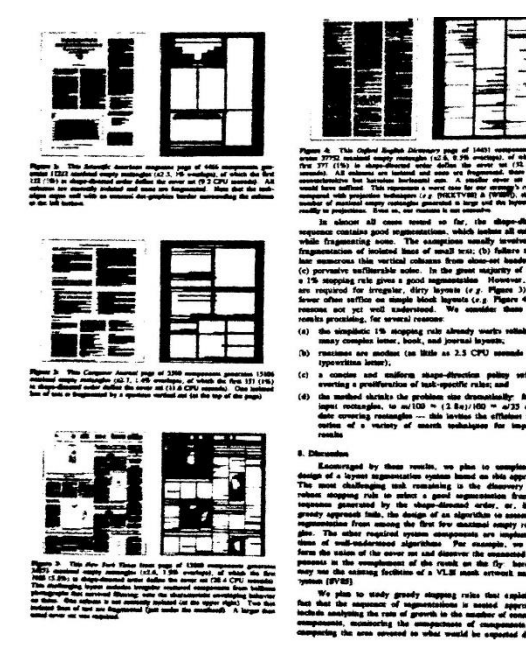
Input



Adaptive Binarization

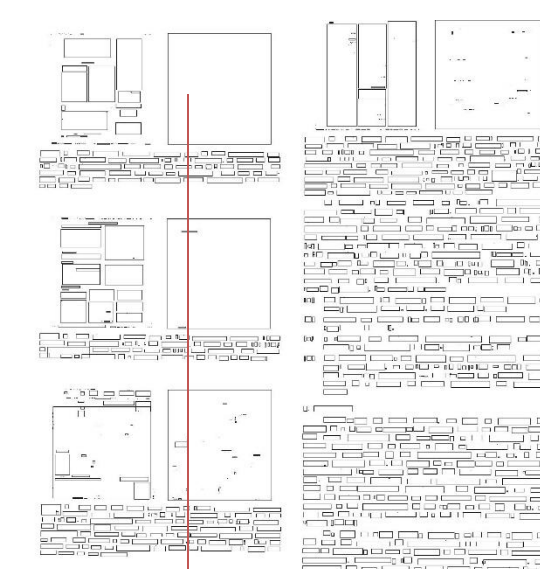


Skew Correction

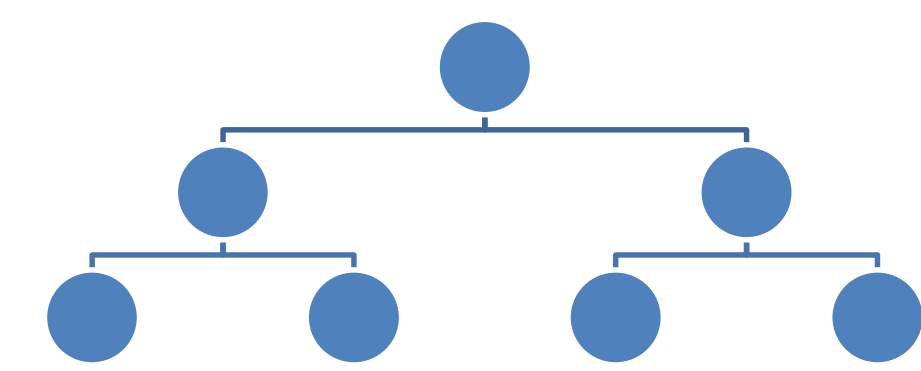


Margin Removal

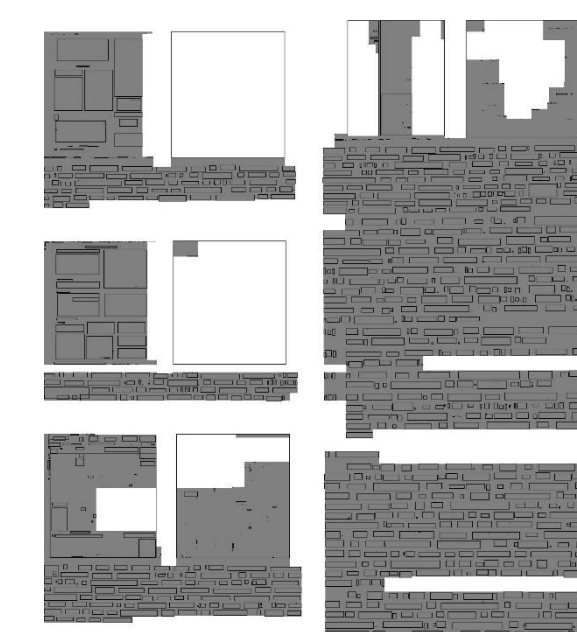
Find Maximal White Rectangles



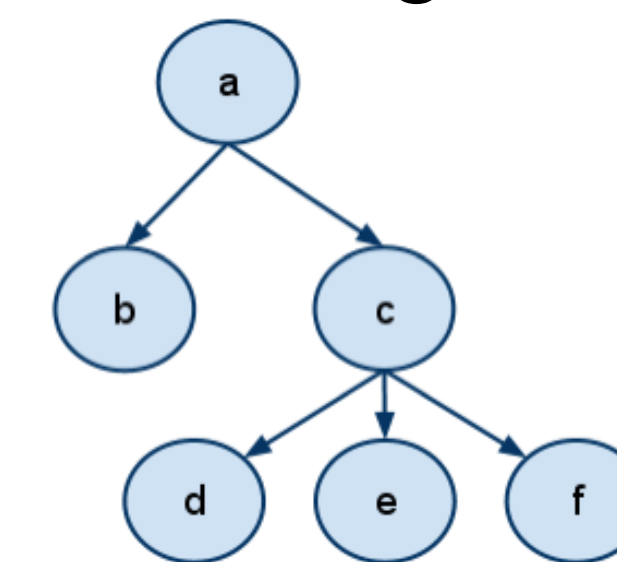
Scan Image for black CCs



Create and balance binary tree of white rectangles

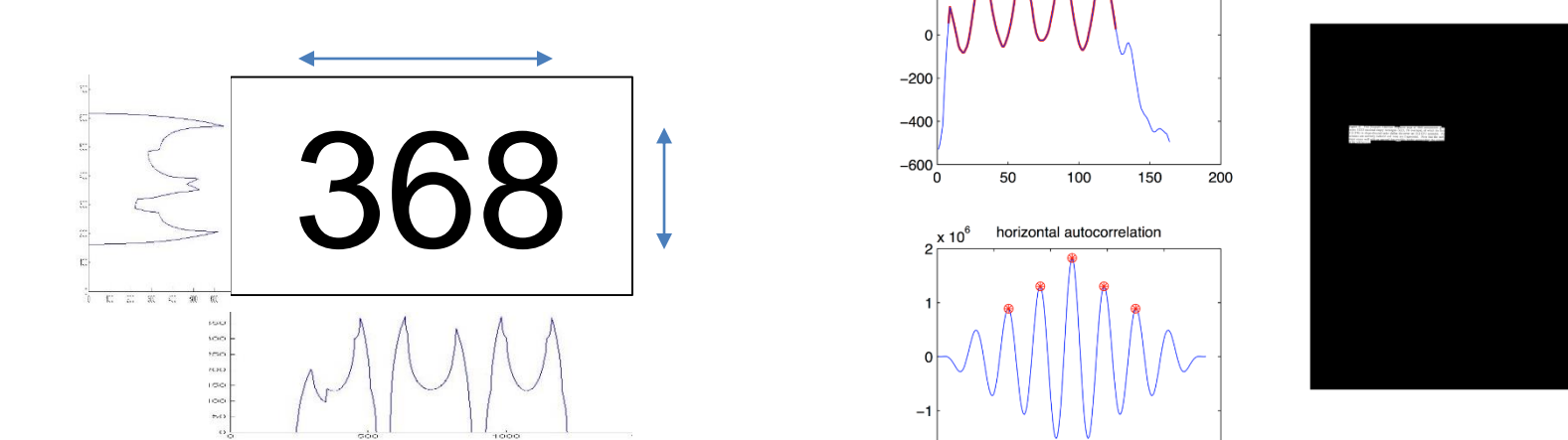


Largest 100 Rectangles

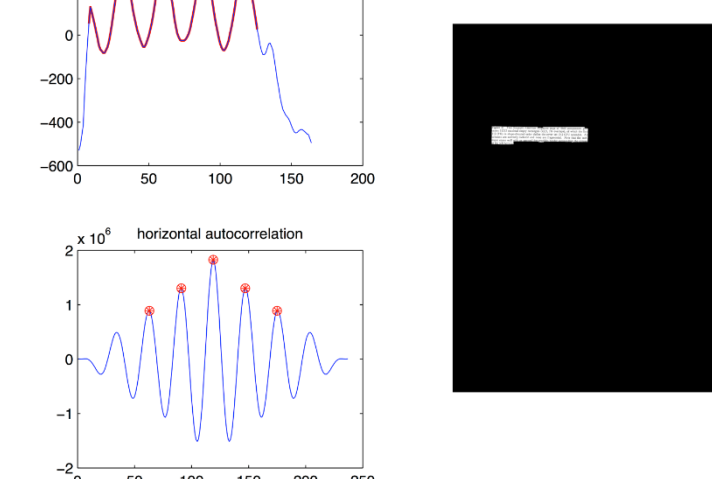


Global and Local Feature Comparison

Classify Regions

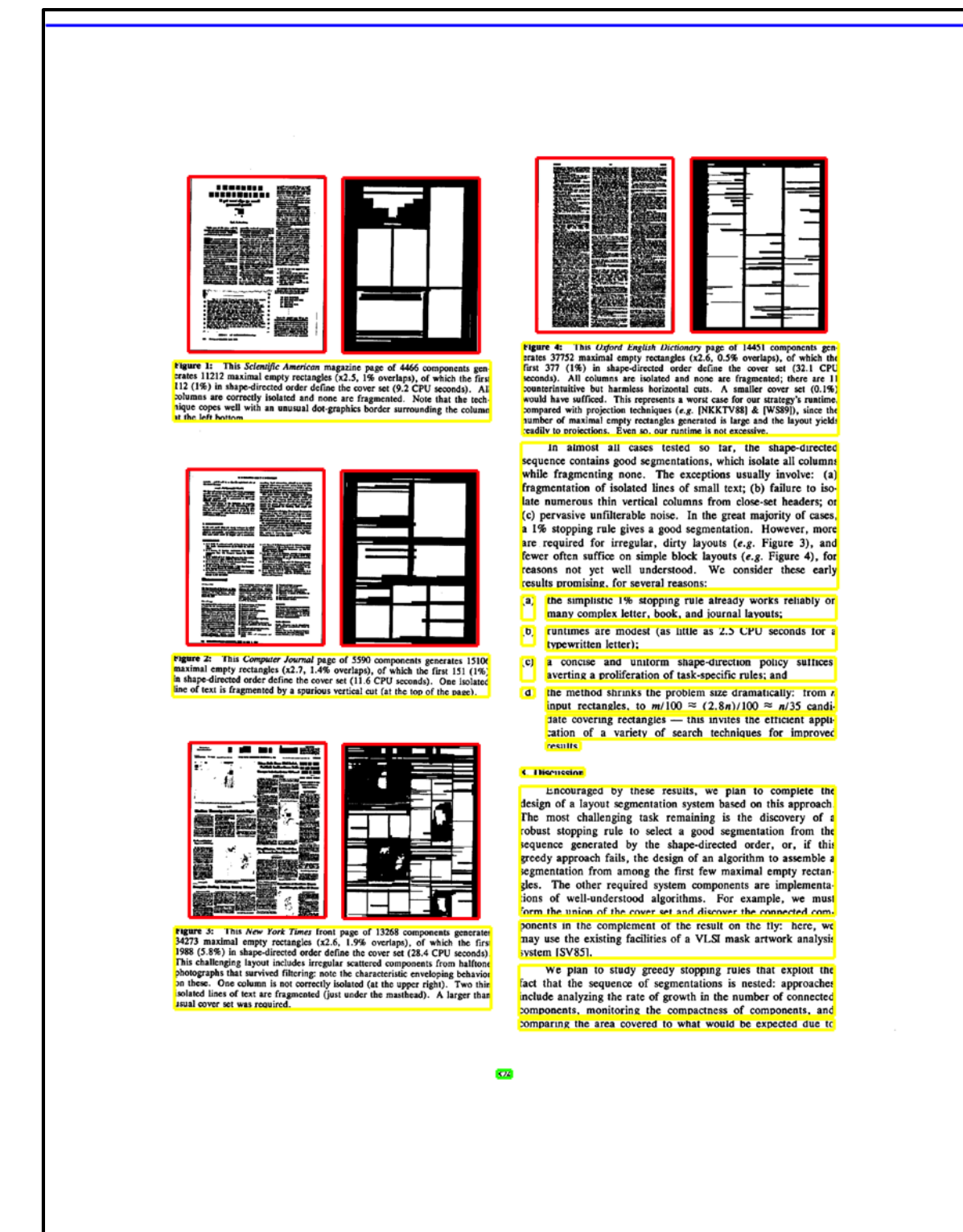


Determine CC Statistics



Use Horizontal Projections

## Results



Color	Type
Red	Figures
Yellow	Text
Green	Page No.
Blue	No type

## Future Work

1. Use the results of layout decomposition to generate code for a LaTeX template for the given document
2. Add text recognition to generate the entire LaTeX document

## References

H.S. Baird, S.E. Jones and S.J. Fortune, "Image Segmentation by Shape-Directed Covers," *Proc. Int'l Conf. Pattern Recognition*, pp. 820-825, 1990.