

Contour Extraction and Visualization from Topographic Maps

Christopher Hansen

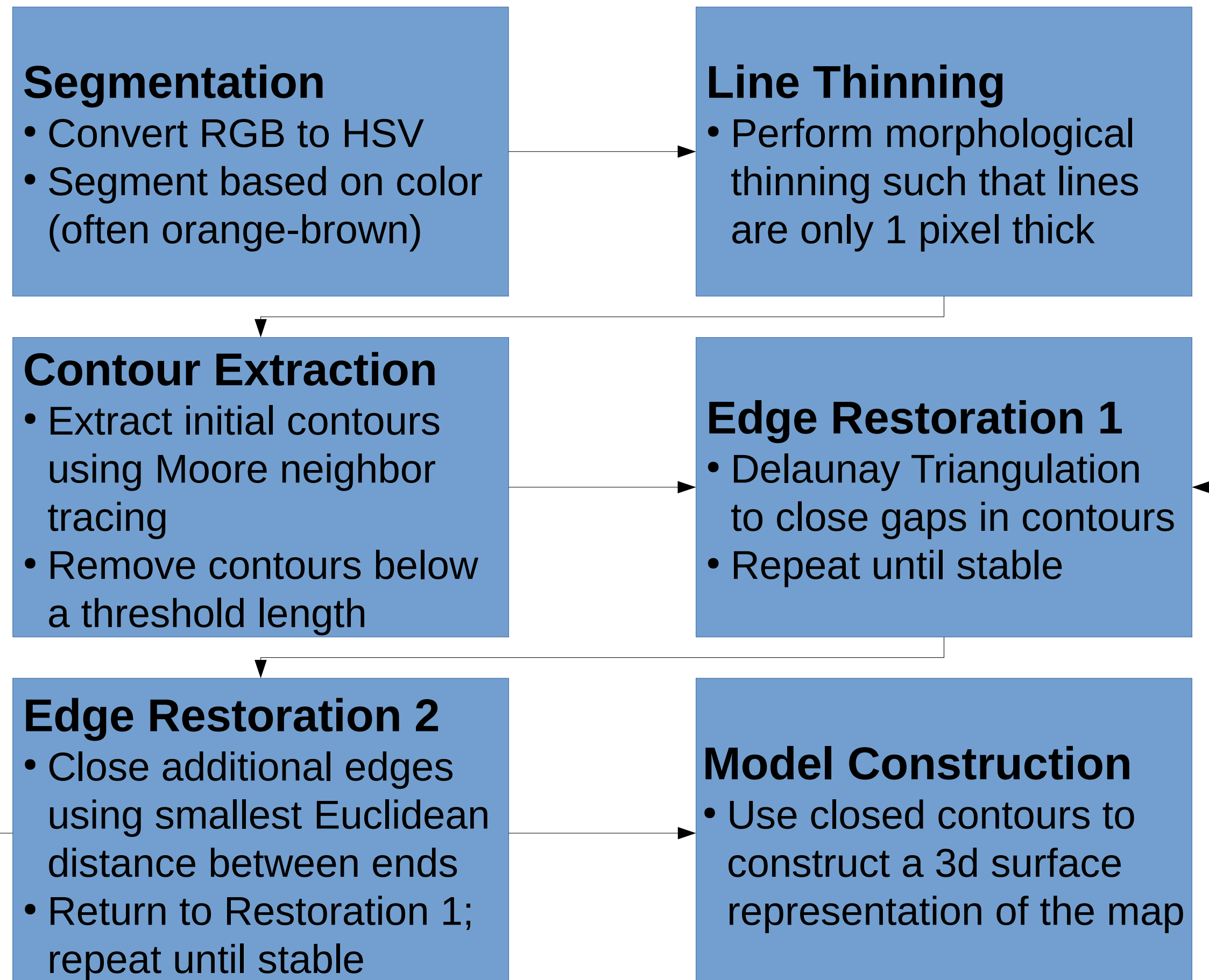
Department of Electrical Engineering, Stanford University

Overview

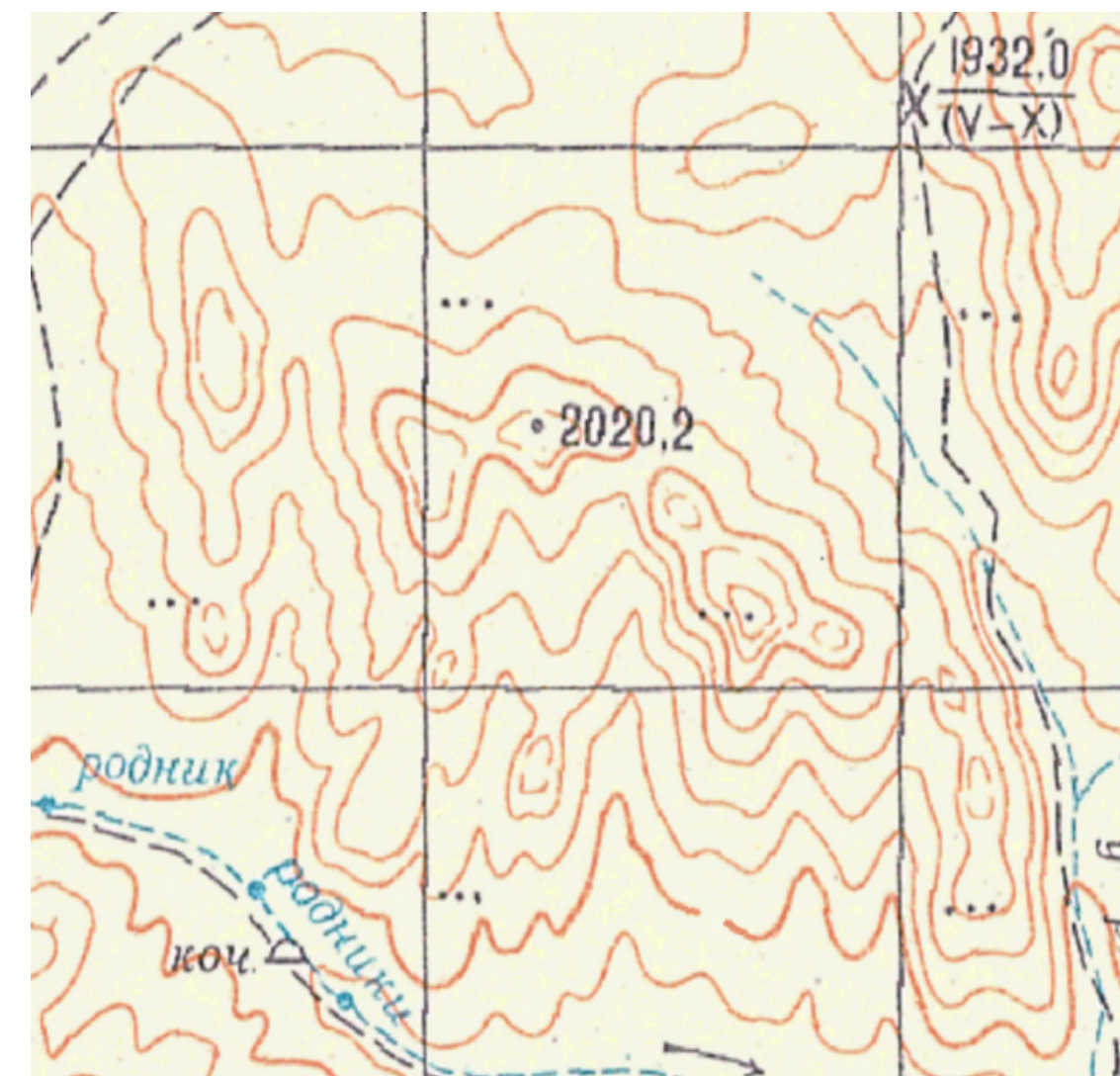
The goal is to take an input map image and extract the contour data such that the information can be used for further GIS processing or for map visualization.

The approach leverages the fact that contours are often a distinct color on maps, and that contours can be expected to be closed either with themselves or the edges of the map.

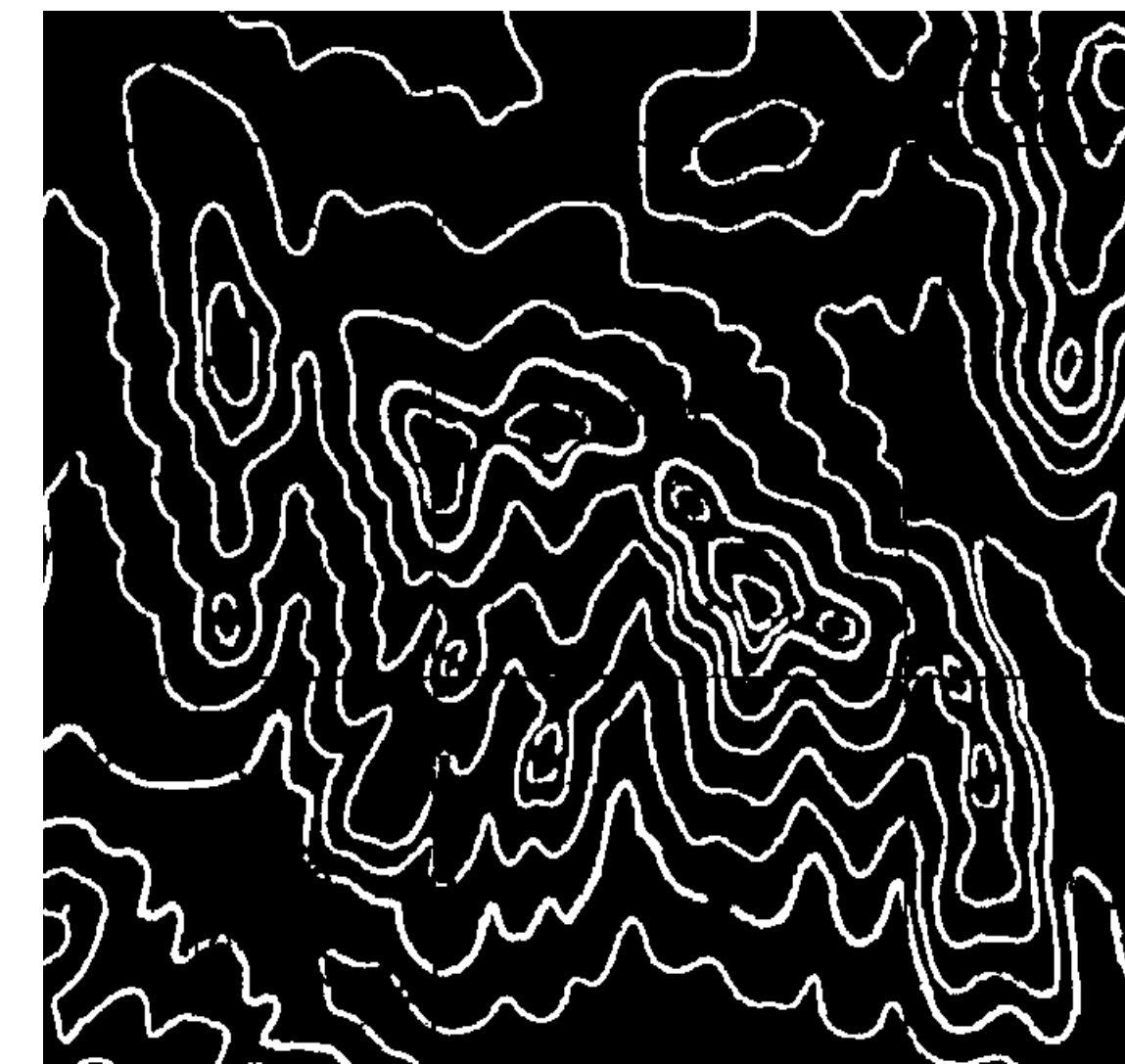
Approach



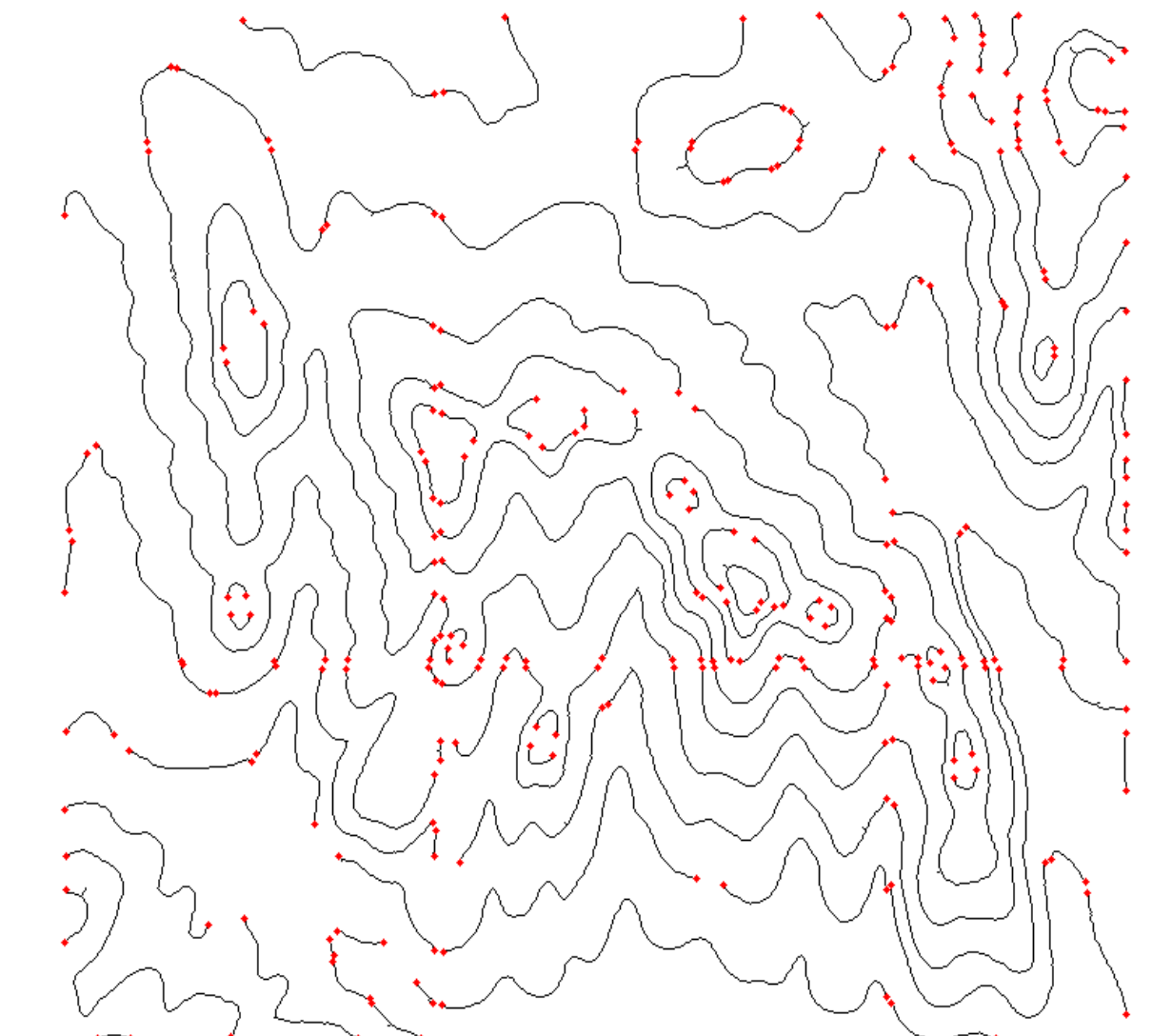
Results



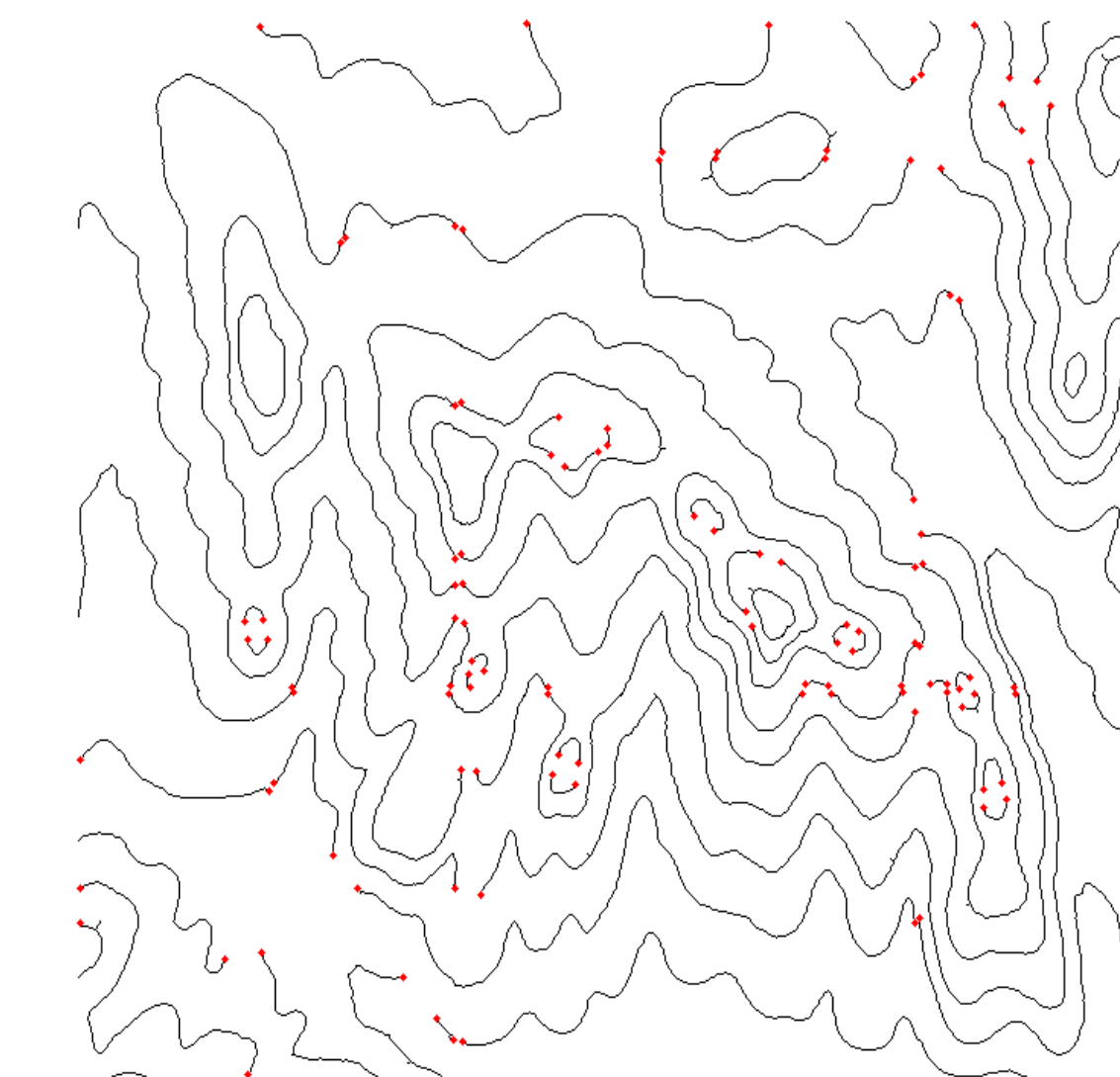
Original image



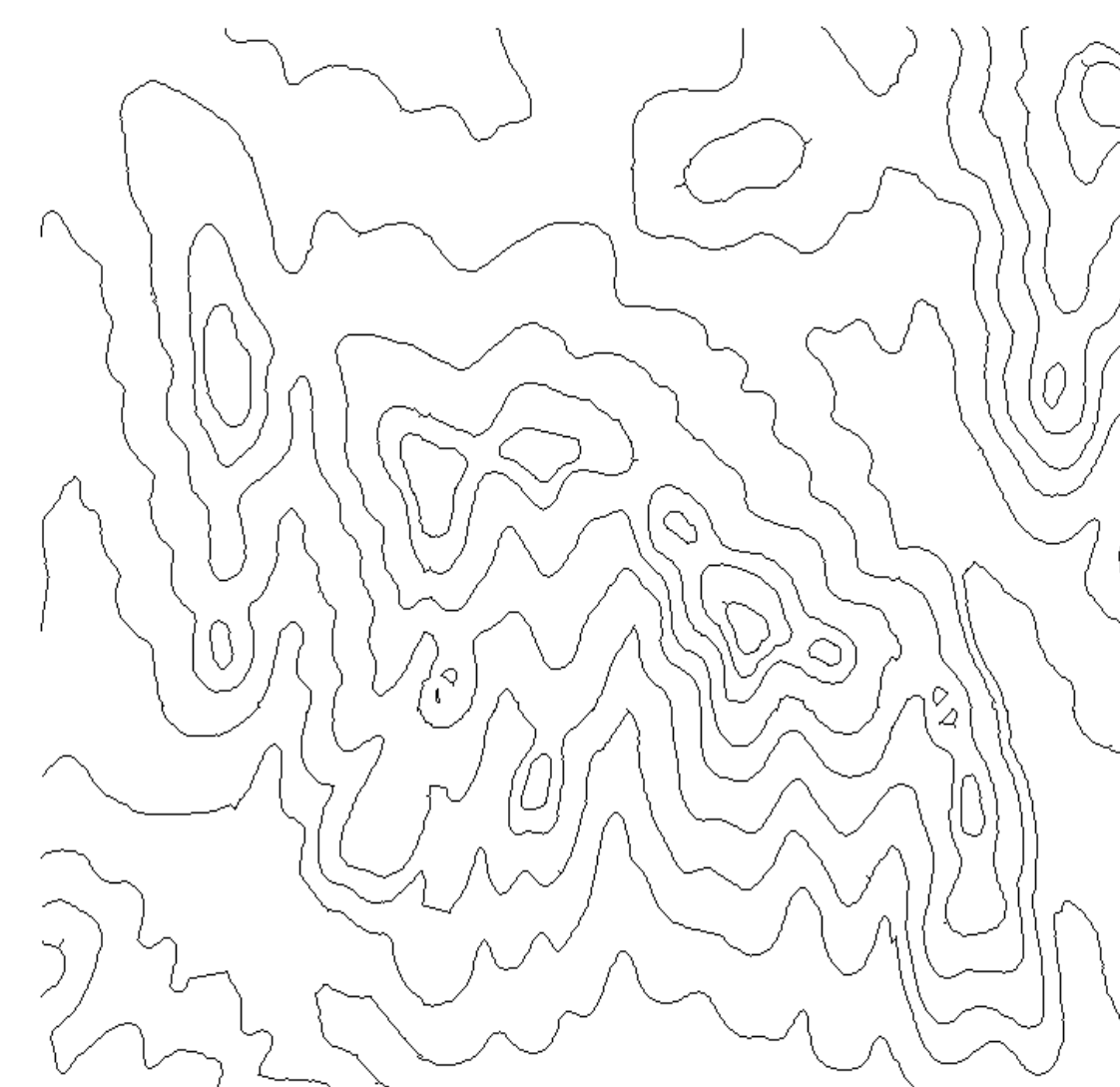
Post Segmentation



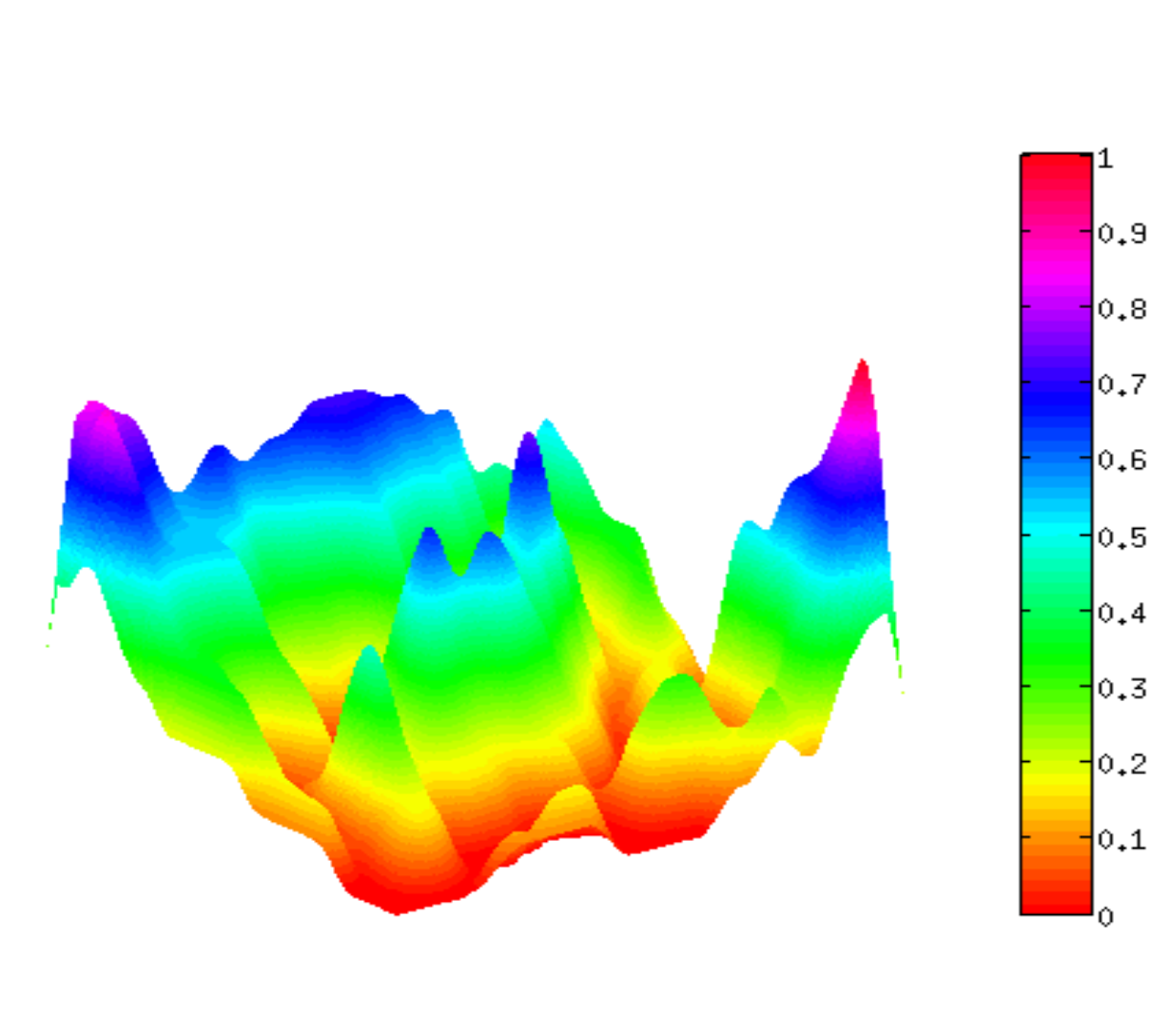
Line Thinning and Contour Extraction



One Iteration of Delaunay Triangulation



Post Reconstruction



Challenges and Further Work

Though contour extraction yields good results for well formatted maps, further work would be needed to address map formatting issues. In particular, contour lines that are closely spaced may blend together during segmentation. Also, contour lines that either vary in color or share the same color as other map objects would segment badly.