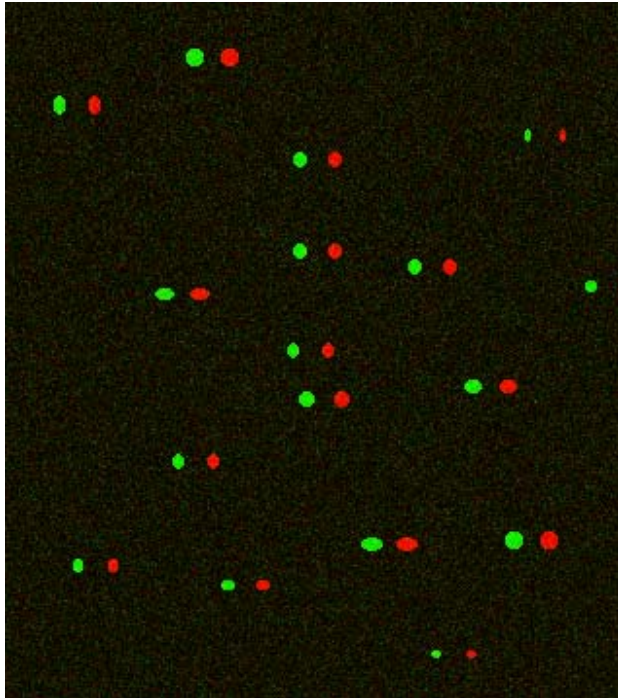


Example #1: horizontal displacement

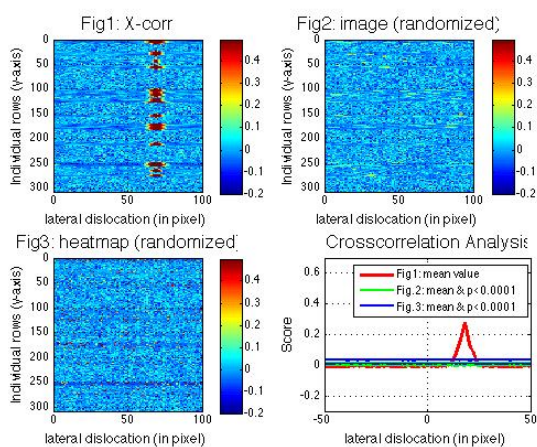


Legend: Overlay of Reference (red) with signal of interest (SOI, green). Note that SOI was shifted to the left.

Images: The images used here and in the analysis below can be found in the attachment: Reference = control_center.tif; SOI = control_left.tif.

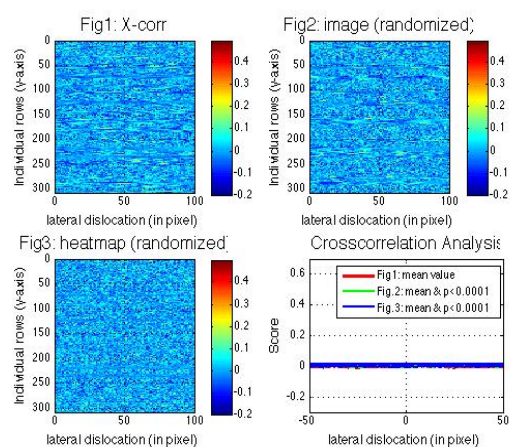
Analysis:

horizontal cross-correlation:



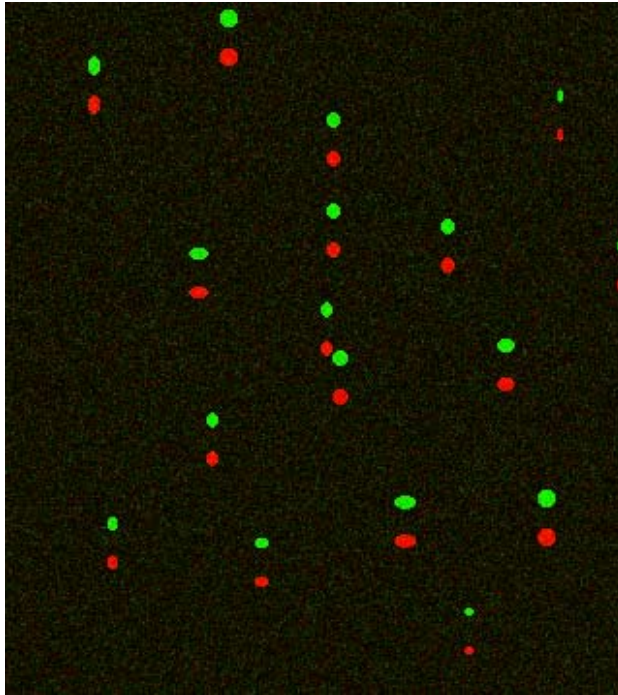
Setting: p1=25; shift=50; rot=0

vertical cross-correlation:



Setting: p1=25; shift=50; rot=90

Example #2: vertical displacement

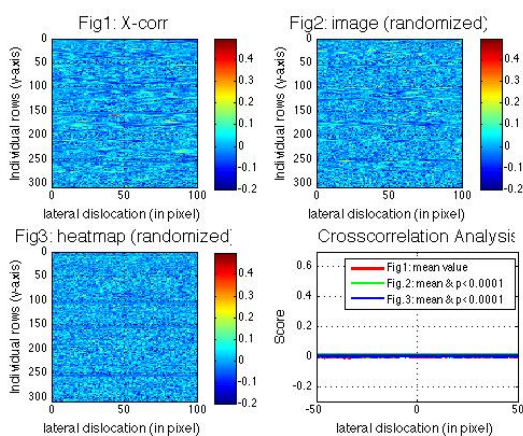


Legend: Overlay of Reference (red) with signal of interest (SOI, green). Note that SOI was shifted to up.

Images: The images used here and in the analysis below can be found in the attachment: Reference = control_center.tif; SOI = control_up.tif.

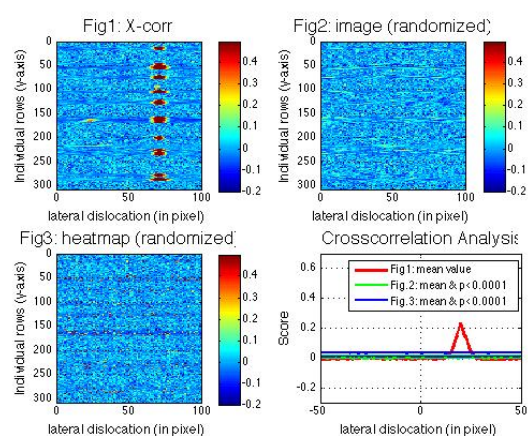
Analysis:

horizontal cross-correlation:



Setting: p1=25; shift=50; rot=0

vertical cross-correlation:



Setting: p1=25; shift=50; rot=90