

WikiLinks

Matthew Pick and Ashley Ngu

The Problem

- Visualizing six degrees of separation through Wikipedia
- The Wikipedia article network is a representation of connections between people

[Barack Obama](#)



[John Kerry](#)



[Ted Kennedy](#)



[Yo-Yo Ma](#)

Search and add articles



fly



map



home



help



about



UI off



full



zoom

Morphology (li

View complete article here

Not to be confused with Morphological typology.

This article includes a list of references, but its sources remain unclear because it has insufficient inline citations. Please help to improve this article by introducing more precise citations. (April 2009)



Linguistics

Theoretical
Cognitive
Generative
Structuralist
Quantitative
Functional theories of grammar
Phonology
Morphology
Morphophonology
Syntax

Article links: 56

closely related

Grammatical case

Lexeme

Phoneme

Phonology

Compound (linguistics)

Etymology

Word formation

Panini

Agglutinative language

Show History

Morphology (linguistics)

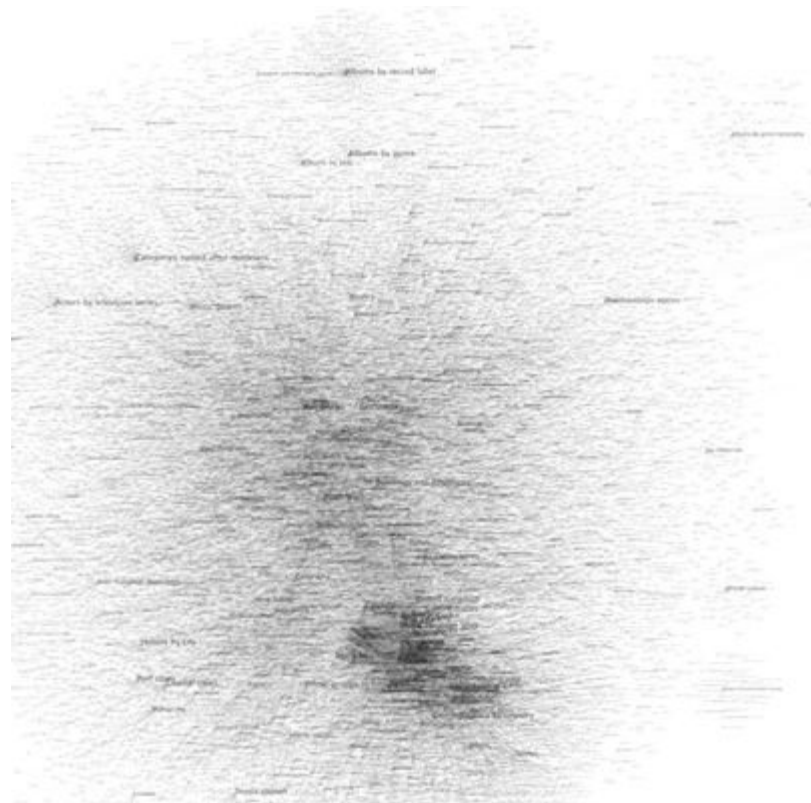
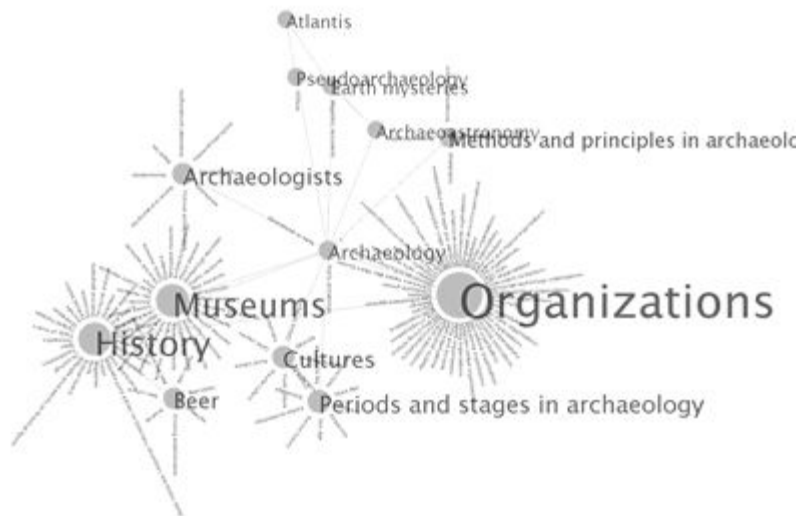
Slavs

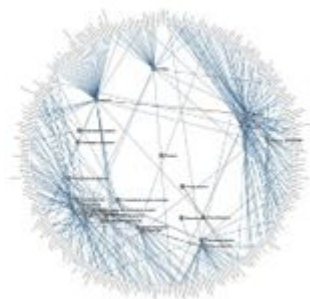
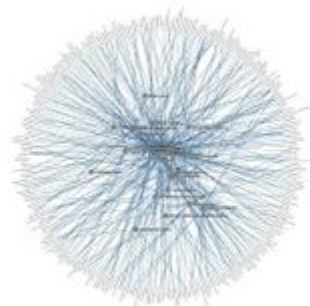
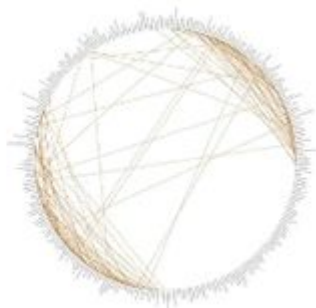
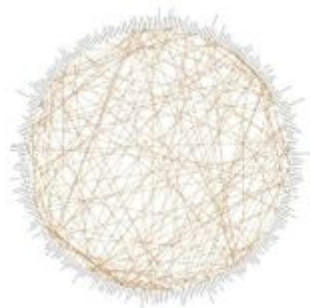
Latin alphabet

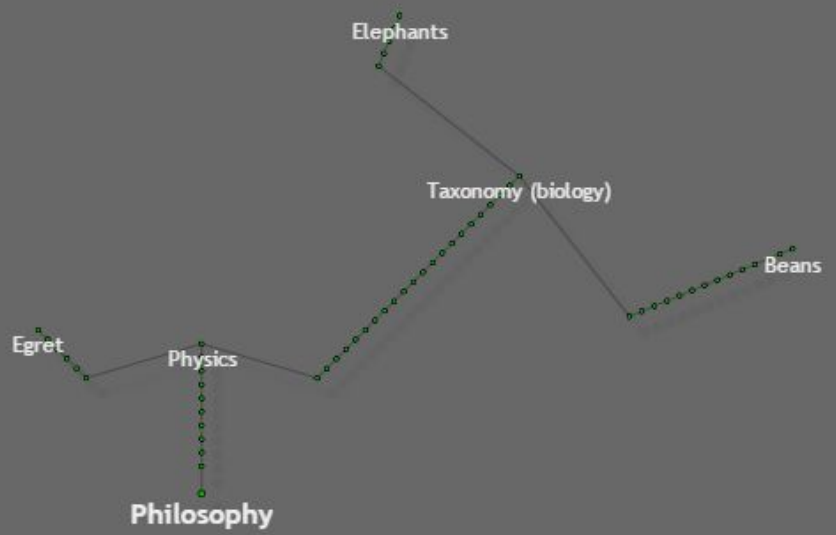
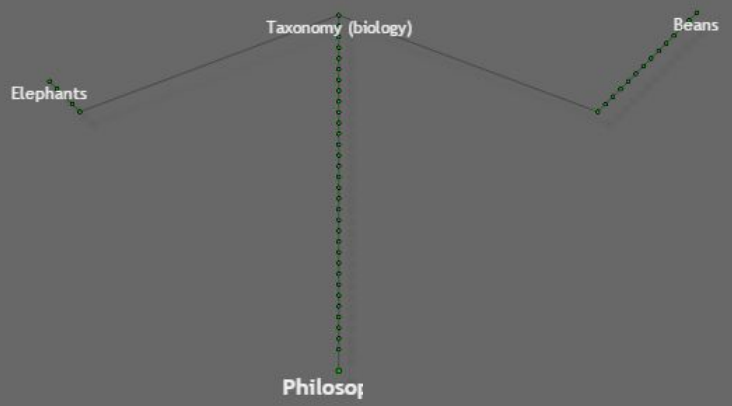
Click link to select, background to deselect

Space bar : Add next 20 links

Scroll Wheel : zoom in and out

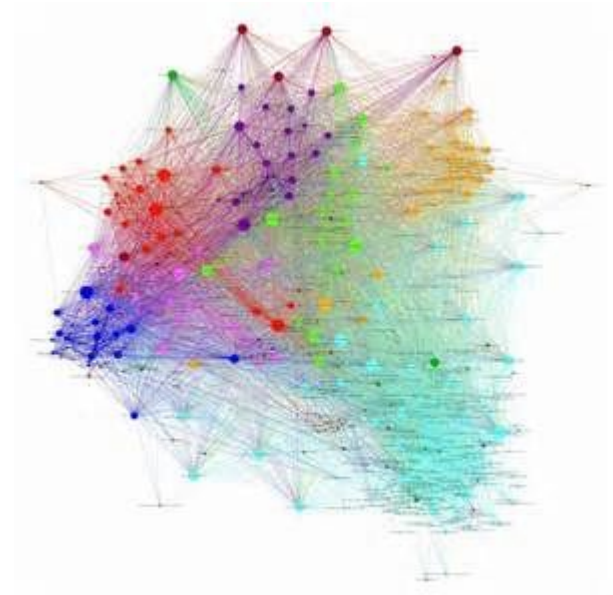






How our project is unique

- Demonstrating degrees of separation through indirect knowledge structure of an encyclopedia
- Discrete, digestible querying of Wikipedia's knowledge structure, avoiding data "hairballs"
- Understanding average connectivity between persons based on Wiki data
- Categorization into various social circles based on Wiki categories + semantic analysis

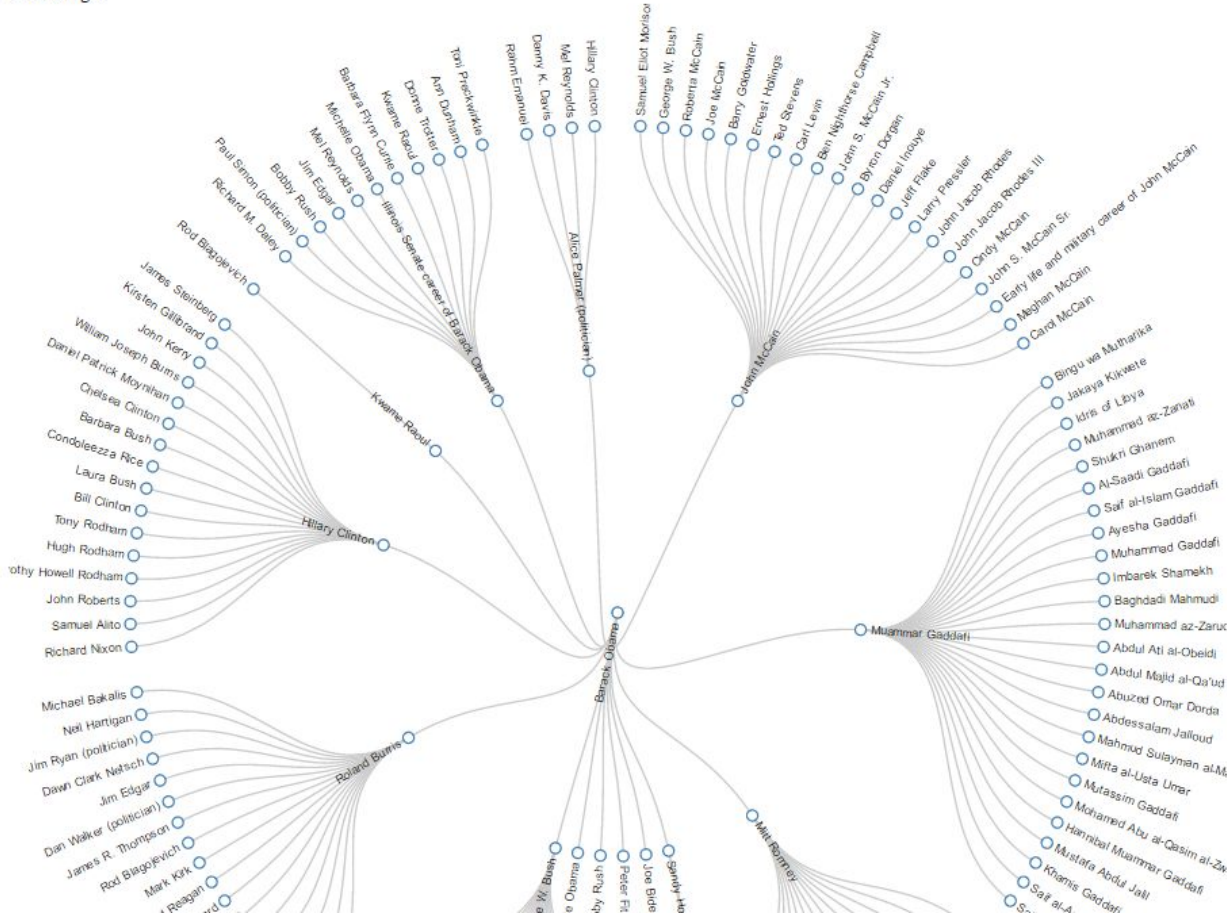


Central Person:

Max Depth:

Searching...

Demo!



Questions We Have

- How can we avoid visualization clutter?
- What is the most intuitive way to search for users?
 - DFS, BFS, other?
- How can we determine which semantic categories a person belongs to?