

HoopMatchups Progress

Lawrence Rogers



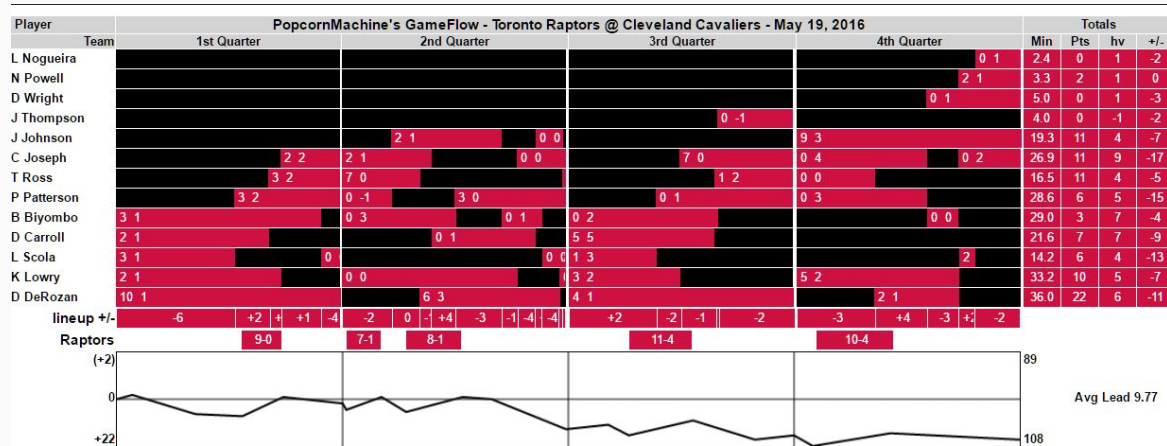
Real Time Analysis of NBA Lineups

Insight: data “story” of an NBA game lies in the changing **matchups** of the two teams

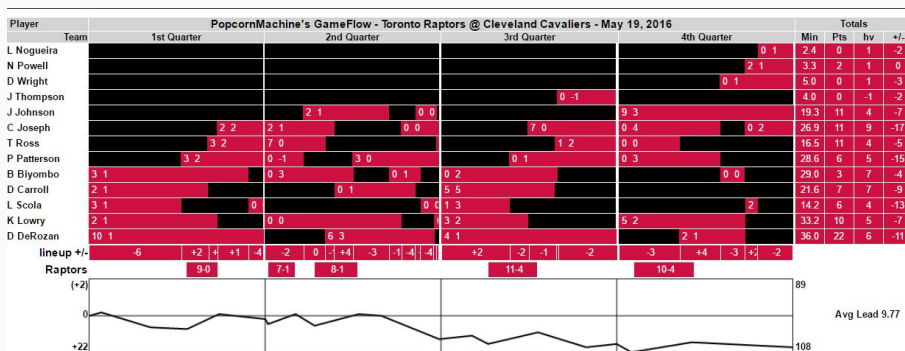
During a live game, show which players are on the court, and aggregate physical characteristics, box score stats, and other data across substitutions

Explain trends in the game, such as point differential, using changing matchup data

Prior Work: PopcornMachine's Gameflow



Prior Work: Popcorn Machine's Gameflow



- Isn't live
- Doesn't allow dynamic querying
- No integration with historical box store statistics

Prior Work: NBA Wowy

76ers

From:
10/27/2015
To: 05/22/2016

Season Part: **Regular** **Playoffs**

* Elton Brand On

Swap

Select Player(s) Off Off

Filters

Submit

Results Page

Great tool for comparing lineups statistically

Doesn't relate lineup data to specific games or real game trends

Also isn't live

Current Progress

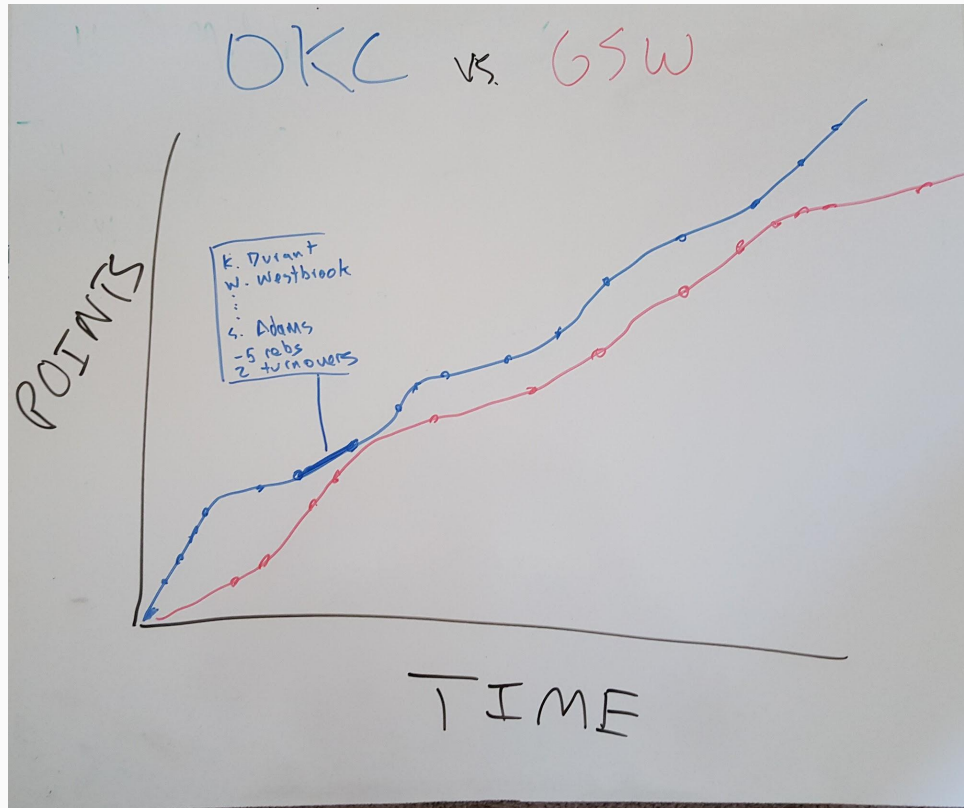
Now:

Nodejs Live Webapp:

- Integration of **live game data** (players on court, score, time remaining etc.) with **player data** (box scores, lineup historical data)
- Visualization of players on court, positions
- UI: Stat tables for players

Up Next:

- Data pipeline work to analyze substitutions real-time to allow in the moment lineup stat aggregation
- Create game trends visualization



Question: How should I make sure it is easy for the user to select the right team for really close games?