

Artistic Style Transfer

Nicholas Tan, Elias Wang

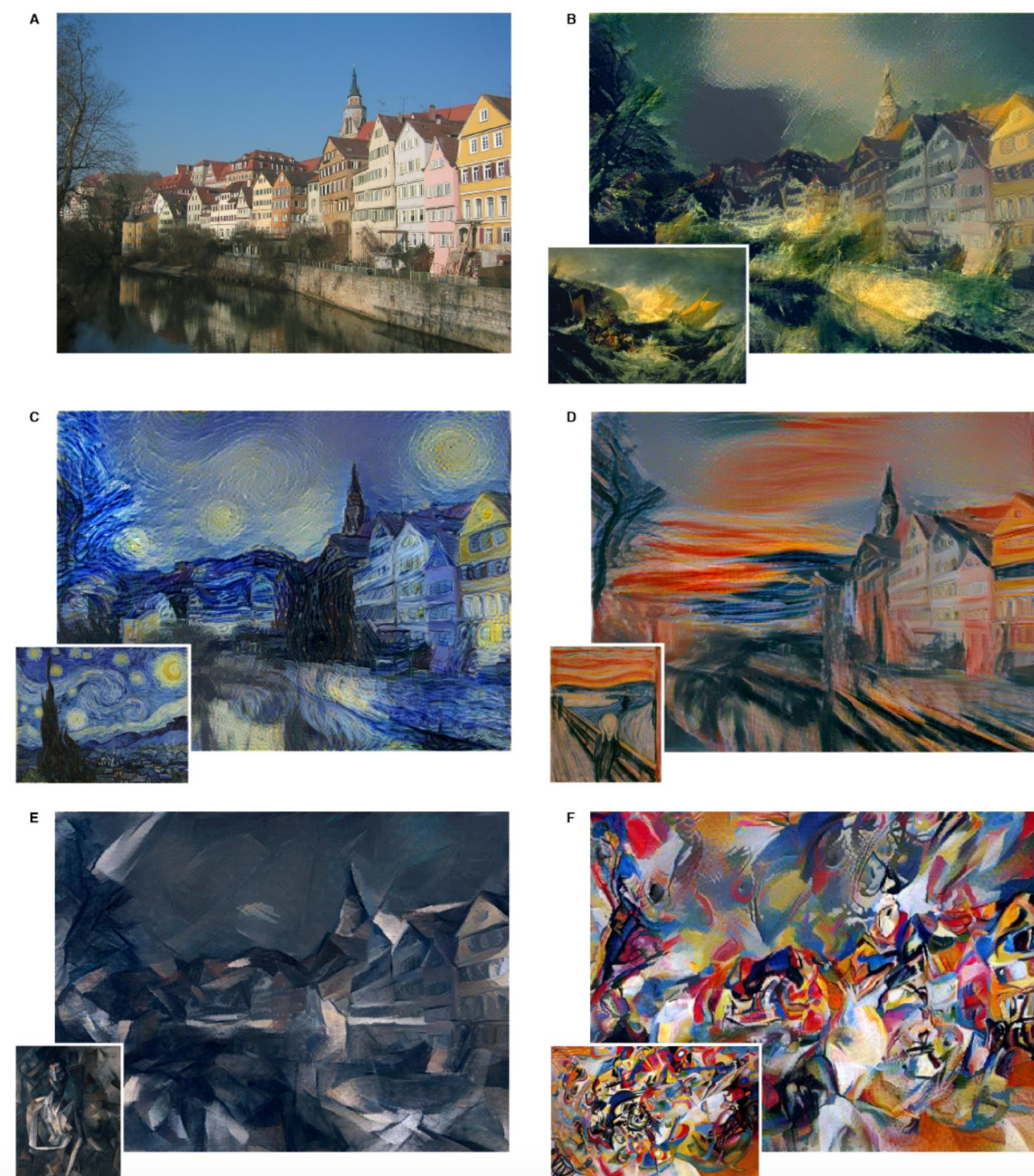
Department of Electrical Engineering, Stanford University

Motivation

Using a biologically inspired vision model, called “Deep Neural Networks,” an artificial system can be trained to learn different styles of painting and subsequently recreate images rendered in that style.

The model is successful because it is able to distinguish between “style” vs. “content”, and merge the two.

Source: L.A. Gatys, A.S. Ecker, and M. Bethge, Image Style Transfer Using Convolutional Neural Networks, CVPR, 2016.



Algorithm Overview

Input:

Content Image



Style Image

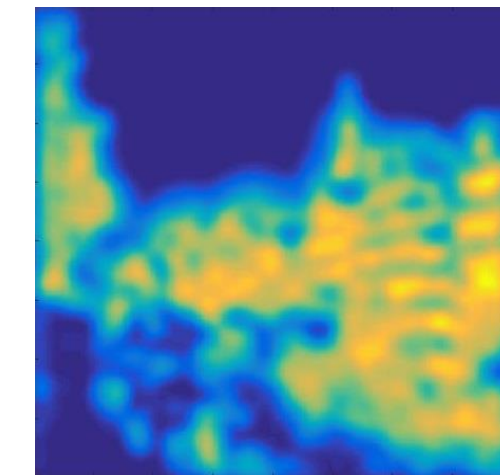


Hallucination

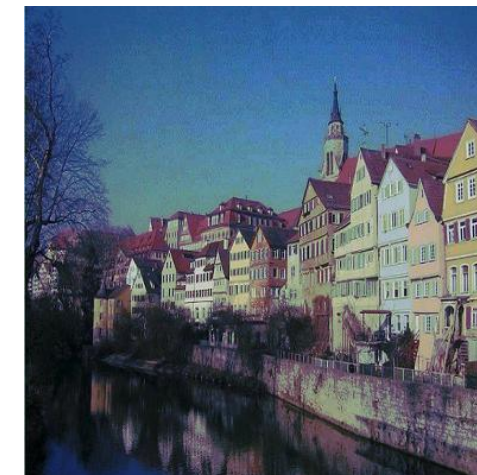


Initialization:

Segmentation



Color transfer



Add noise



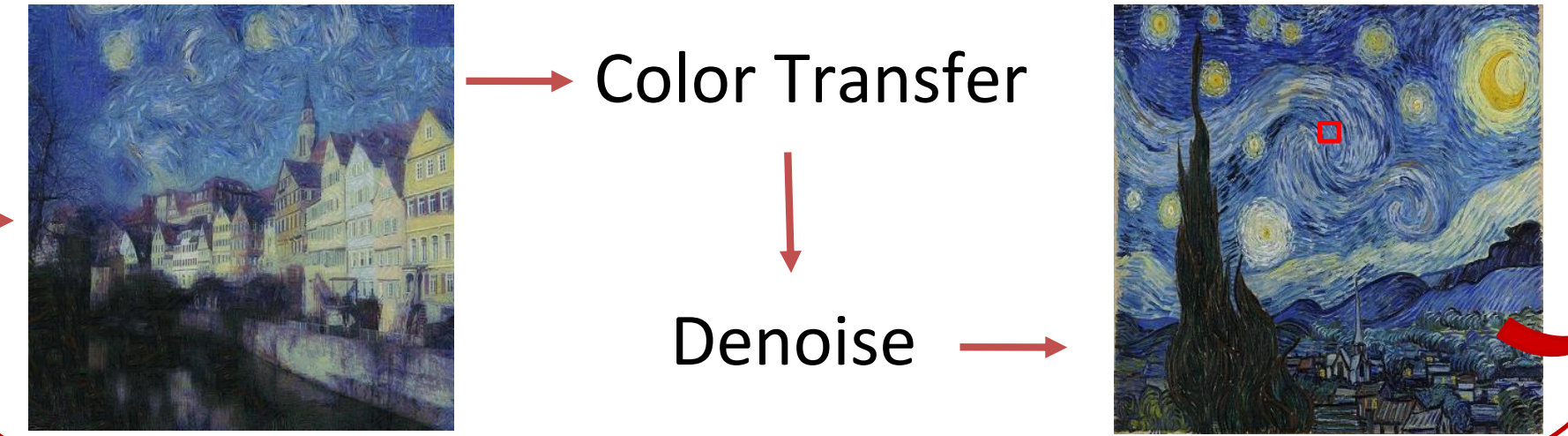
Loop over scales:

Loop over patch sizes:

Style Fusion Patch Matching Style Synthesis

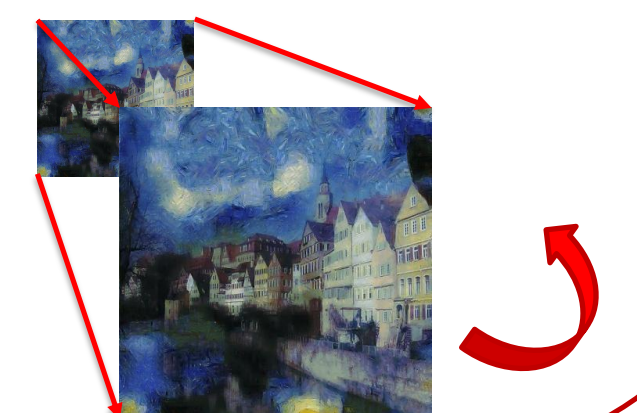


Content Fusion Color Transfer Resize Patch

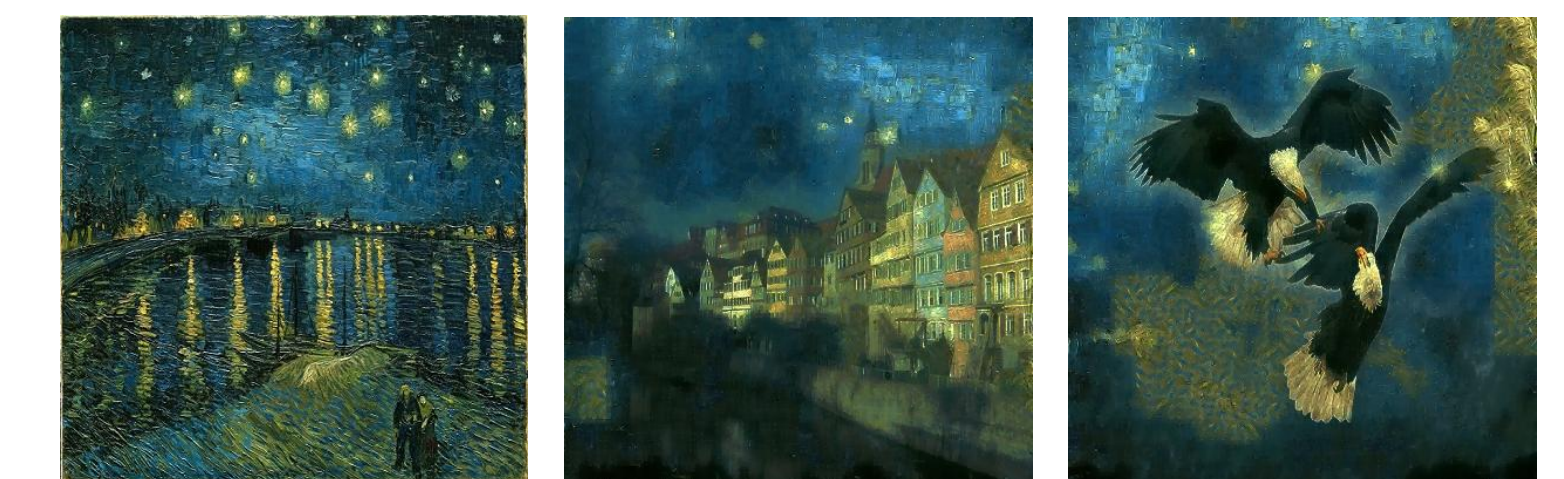


Denoise

Resize Estimate (finer scale)



Experimental Results



Chosen parameters: 3 scales, 2 patch sizes (except smallest scale uses 3 patch sizes), 10% NN noise, 25%+75% hallucination averaging

Hallucination percentage influence :

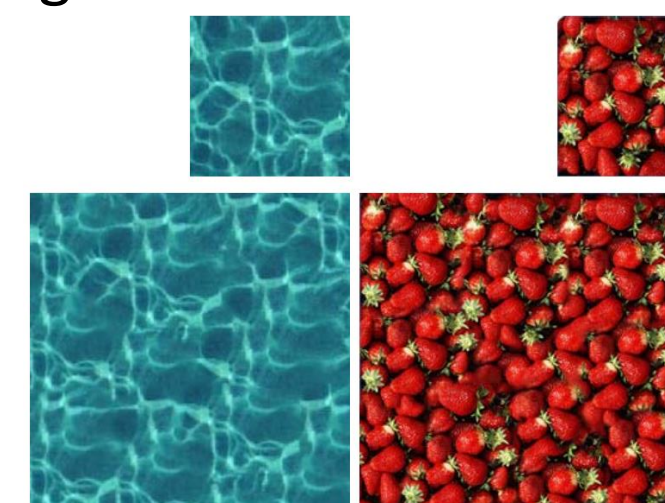
0% 10% 25% 50%



Related Work



Using a modification of Texture-Synthesis it is possible to get fast and comparable style-transfer results. This method focuses on separating information-poor areas to hallucinate the style and high content areas where it keeps the original image



Source: V. Kwatra, I. Essa, A. Bobick, and N. Kwatra, Texture Optimization for Example-Based Synthesis, ACM ToG, Vol. 24, No. 3, pp. 795-802, 2005

Source: M. Elad, P. Milanfar, Style-Transfer via Texture-Synthesis, Google Research, September 21, 2016