

SELECT PR IMAGES AND CAPTIONS FOR:

**Jeremy Frey: Woven**  
March 26 – July 20, 2026

These images are provided for the working media to use in publicizing the exhibition. All other uses are prohibited. Image may not be cropped or bled off the page, and nothing may be superimposed on any image.

Please include the organizer credit line in any press where these images are reproduced.  
Credit line: *Jeremy Frey: Woven* is organized by the Portland Museum of Art, Maine.



Photo courtesy John D. and Catherine T. MacArthur Foundation



Basket in progress in Frey's studio," 2023. Photograph by Jared Lank (Mi'kmaq)



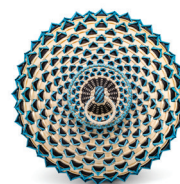
Jeremy Frey (Passamaquoddy, born 1978), *Observer* (detail on the left), 2022, ash, sweetgrass, porcupine quill on birch bark, and dye, 13 1/2 x 10 1/2 x 10 1/2 inches. Collection of Carole Katz, California. © Jeremy Frey. Image courtesy Eric Stoner



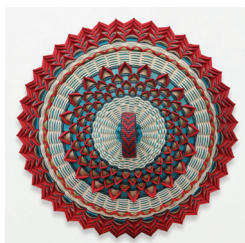
Jeremy Frey (Passamaquoddy, born 1978), *Loon* (detail on the left), 2020, ash, cedar bark, porcupine quill on birch bark, and dye, 36 x 23 x 23 inches. Private collection of Catherine Stiefel, California. © Jeremy Frey. Photograph by Eric Stoner



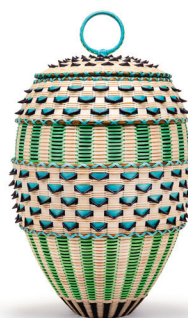
Jeremy Frey (Passamaquoddy, born 1978), *Ghost Bear*, 2018. Ash, sweetgrass, moose antler, and dye, 21 x 10 x 10 inches. On loan from the Bob and Barbara Buker Collection. © Jeremy Frey. Image courtesy Saygo Studios



Jeremy Frey (Passamaquoddy, born 1978), *Blue Point Urchin* (detail on the left), 2016, ash, sweetgrass, and dye, 5 x 9 x 9 inches. Collection of Dr. and Mrs. Ari and Lea Plosker. © Jeremy Frey. Image courtesy Eric Stoner



Jeremy Frey (b. 1978, Passamaquoddy Indian Township Reservation, ME), *Presence* (detail on the left), 2024. Black ash, sweetgrass, and synthetic dye, 12 3/8 x 7 5/8 x 7 5/8 inches. Cantor Arts Center, Stanford University. Image courtesy of Karma



Jeremy Frey (Passamaquoddy, born 1978), *Defensive*, 2022, ash, sweetgrass, and dye, 12 1/2 x 7 1/2 x 7 1/2 inches. Collection of Carole Katz, California. © Jeremy Frey. Image courtesy Eric Stoner



Jeremy Frey (Passamaquoddy, born 1978), *Shooting Star*, 2008, ash, sweetgrass, and dye, 6 x 7 1/2 x 7 1/2 inches. Portland Museum of Art, Maine. Museum purchase with support from the Peggy and Harold Osher Acquisition Fund, 2022.30a,b. © Jeremy Frey. Image courtesy Luc Demers