

Cantor Arts Center at Stanford University

Reality Makes Them Dream: American Photography, 1929–1941 Final Checklist March 29, 2023–July 30, 2023

Exhibit Checklist

Doris Ulmann, American, 1882–1934

Portrait of a Woman, Appalachia c. 1933

Platinum print

Credit line: Cantor Arts Center Collection, Committee for Art Acquisitions Fund

Accession no.: 1974.241



John Vachon, American, 1914–1975

Girl on Lobster, Washington, D.C. 1938

Gelatin silver print

Credit line: Cantor Arts Center Collection, Gift of R. Joseph and Elaine R. Monsen

Accession no.: 1977.120



Harold Elliott, American, 1892–1970

Lone Eagle c. 1940

Chlorobromide print

Credit line: Cantor Arts Center Collection, Gift of Art and Janet Garrison

Accession no.: 1980.1.7



Wright Morris, American, born in 1941

Barber Pole and Hydrant, Needles, California 1938

Gelatin silver print

Credit line: Cantor Arts Center Collection, Gift from the Alinder Collection

Accession no.: 1980.185



For more information contact: Margaret Whitehorn, Public Relations Assistant Manager,
Cantor Arts Center at Stanford University, Lomita Dr. at Museum Way, Stanford, CA
94305, 650-724-3600, mmwhite@stanford.edu, museum.stanford.edu

**Cantor Arts Center
at Stanford University**

**Reality Makes Them Dream: American Photography, 1929–1941
Final Checklist
March 29, 2023–July 30, 2023**

Peter Stackpole, American, 1913–1997

Mother and Daughter 1934

Gelatin silver print

Credit line: Cantor Arts Center Collection, Committee for Art Acquisitions Fund

Accession no.: 1982.60



Robert Disraeli, American, born in Germany, 1905–1988

Sunday—After Church 1933

Gelatin silver print

Credit line: Cantor Arts Center Collection, Committee for Art Acquisitions Fund

Accession no.: 1983.293



Wright Morris, American, 1910–1998

Untitled 1940

Gelatin silver print

Credit line: Cantor Arts Center Collection, Gift from the Alinder Collection

Accession no.: 1983.399



Peter Stackpole, American, 1913–1997

Press Photographers 1932

Gelatin silver print

Credit line: Cantor Arts Center Collection, Gift of Ayleen Ito Lee

Accession no.: 1984.148.9



For more information contact: Margaret Whitehorn, Public Relations Assistant Manager,
Cantor Arts Center at Stanford University, Lomita Dr. at Museum Way, Stanford, CA
94305, 650-724-3600, mmwhite@stanford.edu, museum.stanford.edu

**Cantor Arts Center
at Stanford University**

**Reality Makes Them Dream: American Photography, 1929–1941
Final Checklist
March 29, 2023–July 30, 2023**

Peter Stackpole, American, 1913–1997

Overview of the City 1935

Gelatin silver print

Credit line: Cantor Arts Center Collection, Gift of Ayleen Ito Lee

Accession no.: 1984.148.32



Peter Stackpole, American, 1913–1997

Disassembling the Hammerhead 1935

Gelatin silver print

Credit line: Cantor Arts Center Collection, Gift of Ayleen Ito Lee

Accession no.: 1984.148.35



Peter Stackpole, American, 1913–1997

Milk Bottles 1932

Gelatin silver print

Credit line: Cantor Arts Center Collection, Gift of Ayleen Ito Lee

Accession no.: 1984.148.41



Russell Lee, American, 1903–1986

Jim Norris and wife, homesteaders, Pie Town, New Mexico 1940

Dye transfer print

Credit line: Cantor Arts Center Collection, Committee for Art Acquisitions Fund

Accession no.: 1984.176



For more information contact: Margaret Whitehorn, Public Relations Assistant Manager,
Cantor Arts Center at Stanford University, Lomita Dr. at Museum Way, Stanford, CA
94305, 650-724-3600, mmwhite@stanford.edu, museum.stanford.edu

**Cantor Arts Center
at Stanford University**

**Reality Makes Them Dream: American Photography, 1929–1941
Final Checklist
March 29, 2023–July 30, 2023**

Ansel Adams, American, 1902–1984

A Man of Taos 1930

Gelatin silver print

Credit line: Cantor Arts Center Collection, Gift from the Alinder Collection

Accession no.: 1984.291



Berenice Abbott, American, 1898–1991

Broome Street, Manhattan 1935

Gelatin silver print

Credit line: Cantor Arts Center Collection, Gift from the Alinder Collection

Accession no.: 1985.245



Aaron Siskind, American, 1903–1991

Untitled c. 1938

Gelatin silver print

Credit line: Cantor Arts Center Collection, Vincent Bressi Fund

Accession no.: 1986.62



For more information contact: Margaret Whitehorn, Public Relations Assistant Manager,
Cantor Arts Center at Stanford University, Lomita Dr. at Museum Way, Stanford, CA
94305, 650-724-3600, mmwhite@stanford.edu, museum.stanford.edu

**Cantor Arts Center
at Stanford University**

**Reality Makes Them Dream: American Photography, 1929–1941
Final Checklist
March 29, 2023–July 30, 2023**

Marion Post Wolcott, American, 1910–1990

One of the Wilkins family making biscuits for dinner on cornshucking day at Mrs. Fred Wilkins' home near Tallyho, Granville County, North Carolina 1939

Gelatin silver print

Credit line: Cantor Arts Center Collection, Gift of Judith Hochberg and Michael Mattis

Accession no.: 1986.295



Berenice Abbott, American, 1898–1991

Warehouse, Water and Dock Streets 1936

Gelatin silver print

Credit line: Cantor Arts Center Collection, Gift of Daniel Mattis

Accession no.: 1986.304



Clarence John Laughlin, American, 1905–1985

The Repulsive Bed 1941

Gelatin silver print

Credit line: Cantor Arts Center Collection, Gift from the Alinder Collection

Accession no.: 1986.344



For more information contact: Margaret Whitehorn, Public Relations Assistant Manager,
Cantor Arts Center at Stanford University, Lomita Dr. at Museum Way, Stanford, CA
94305, 650-724-3600, mmwhite@stanford.edu, museum.stanford.edu

**Cantor Arts Center
at Stanford University**

**Reality Makes Them Dream: American Photography, 1929–1941
Final Checklist
March 29, 2023–July 30, 2023**

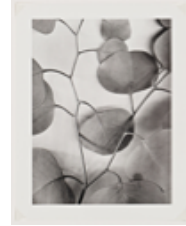
Alma Lavenson, American, born in 1941

Eucalyptus Leaves 1933

Gelatin silver print

Credit line: Cantor Arts Center Collection, Gift from the Alinder Collection

Accession no.: 1987.139



Barbara Morgan, American, 1900–1992

Martha Graham–Ekstasis (Torso) 1935

Gelatin silver print

Credit line: Cantor Arts Center Collection, Given in memory of Belva Kibler by
Barbara Morgan

Accession no.: 1988.57



Ansel Adams, American, 1902–1984

Untitled c. 1931

Gelatin silver print

Credit line: Cantor Arts Center Collection, Gift from the Alinder Collection

Accession no.: 1988.145



Ansel Adams, American, 1902–1984

Sculptor's Tools, San Francisco, California 1930

Gelatin silver print

Credit line: Cantor Arts Center Collection, Gift from the Alinder Collection

Accession no.: 1988.146



For more information contact: Margaret Whitehorn, Public Relations Assistant Manager,
Cantor Arts Center at Stanford University, Lomita Dr. at Museum Way, Stanford, CA
94305, 650-724-3600, mmwhite@stanford.edu, museum.stanford.edu

**Cantor Arts Center
at Stanford University**

**Reality Makes Them Dream: American Photography, 1929–1941
Final Checklist
March 29, 2023–July 30, 2023**

Nathan Lerner, American, 1913–1997

Uncommon Man 1936

Gelatin silver print

Credit line: Cantor Arts Center Collection, Gift of the Mattis Family

Accession no.: 1991.3



Dorothea Lange, American, 1895–1965

Migrant Mother, California 1936

Gelatin silver print

Credit line: Cantor Arts Center Collection, Gift from the Alinder Collection

Accession no.: 1991.196



Edward Weston, American, 1886–1958

Hot Coffee, Mojave Desert 1937

Gelatin silver print

Credit line: Cantor Arts Center Collection, Gift from the Alinder Collection

Accession no.: 1991.215



Cedric Wright, American, 1889–1959

Wildflowers c. 1930s-1940s

Gelatin silver print

Credit line: Cantor Arts Center Collection, Gift from the Alinder Collection

Accession no.: 1993.116



For more information contact: Margaret Whitehorn, Public Relations Assistant Manager,
Cantor Arts Center at Stanford University, Lomita Dr. at Museum Way, Stanford, CA
94305, 650-724-3600, mmwhite@stanford.edu, museum.stanford.edu

**Cantor Arts Center
at Stanford University**

**Reality Makes Them Dream: American Photography, 1929–1941
Final Checklist
March 29, 2023–July 30, 2023**

Paul Strand, American, 1890–1976

White Horse, Ranchos de Taos, New Mexico 1932

Gelatin silver print

Credit line: Cantor Arts Center Collection, Gift from the Alinder Collection

Accession no.: 1996.351



Ruth Bernhard, American, born in Germany, 1905–2006

Kitchen Music 1930-1933

Gelatin silver print

Credit line: Cantor Arts Center Collection, Gift from the Alinder Collection

Accession no.: 1997.186



Wright Morris, American, 1910–1998

Meeting House, Southbury, Connecticut 1940

Gelatin silver print

Credit line: Cantor Arts Center Collection, Gift from the Alinder Collection

Accession no.: 1997.193



Marion Post Wolcott, American, 1910–1990

Cornshocks and fences on farm near Marion, Virginia 1940

Gelatin silver print

Credit line: Cantor Arts Center Collection, Gift of Michael and Sheila Wolcott

Accession no.: 1998.384



For more information contact: Margaret Whitehorn, Public Relations Assistant Manager,
Cantor Arts Center at Stanford University, Lomita Dr. at Museum Way, Stanford, CA
94305, 650-724-3600, mmwhite@stanford.edu, museum.stanford.edu

**Cantor Arts Center
at Stanford University**

**Reality Makes Them Dream: American Photography, 1929–1941
Final Checklist
March 29, 2023–July 30, 2023**

Marion Post Wolcott, American, 1910–1990

Center of town. Woodstock, Vermont. "Snowy night" 1940

Selenium-tinted gelatin silver print

Credit line: Cantor Arts Center Collection, Gift of Michael and Sheila Wolcott

Accession no.: 2000.135



Lou Stoumen, American, 1917–1991

Times Square in the Rain 1940

Toned gelatin silver print

Credit line: Cantor Arts Center Collection, Gift from the Alinder Collection

Accession no.: 2000.252



Margaret Bourke-White, American, 1904–1971

Drilling Rig, The Texas Co. 1937

Gelatin silver print

Credit line: Cantor Arts Center Collection, Elizabeth K. Raymond Fund

Accession no.: 2010.12



Berenice Abbott, American, 1898–1991

Sumner Healy Antique Shop 1936

Gelatin silver print

Credit line: Cantor Arts Center Collection, Gift of Judge Leonard Edwards

Accession no.: 2014.28



For more information contact: Margaret Whitehorn, Public Relations Assistant Manager,
Cantor Arts Center at Stanford University, Lomita Dr. at Museum Way, Stanford, CA
94305, 650-724-3600, mmwhite@stanford.edu, museum.stanford.edu

**Cantor Arts Center
at Stanford University**

**Reality Makes Them Dream: American Photography, 1929–1941
Final Checklist
March 29, 2023–July 30, 2023**

Ansel Adams, American, 1902–1984

Dogwood, Yosemite National Park, California 1938

Gelatin silver print

Credit line: Cantor Arts Center Collection, The Capital Group Foundation
Photography Collection at Stanford University

Accession no.: 2019.42.14



Ansel Adams, American, 1902–1984

**Georgia O'Keeffe and Orville Cox, Canyon de Chelly National Monument, Arizona
1937**

Gelatin silver print

Credit line: Cantor Arts Center Collection, The Capital Group Foundation
Photography Collection at Stanford University

Accession no.: 2019.42.20



Ansel Adams, American, 1902–1984

**High Country Crags and Moon, Sunrise, Kings Canyon National Park, California
1936**

Gelatin silver print

Credit line: Cantor Arts Center Collection, The Capital Group Foundation
Photography Collection at Stanford University

Accession no.: 2019.42.25



For more information contact: Margaret Whitehorn, Public Relations Assistant Manager,
Cantor Arts Center at Stanford University, Lomita Dr. at Museum Way, Stanford, CA
94305, 650-724-3600, mmwhite@stanford.edu, museum.stanford.edu

**Cantor Arts Center
at Stanford University**

**Reality Makes Them Dream: American Photography, 1929–1941
Final Checklist
March 29, 2023–July 30, 2023**

Ansel Adams, American, 1902–1984

Moonrise, Hernandez, New Mexico 1941

Gelatin silver print

Credit line: Cantor Arts Center Collection, The Capital Group Foundation
Photography Collection at Stanford University

Accession no.: 2019.42.37



John Gutmann, American, born in Germany, 1905–1998

Dream of Uprising 1935

Gelatin silver print

Credit line: Cantor Arts Center Collection, The Capital Group Foundation
Photography Collection at Stanford University

Accession no.: 2019.44.10



John Gutmann, American, born in Germany, 1905–1998

"Switch to Dodge," An American Altar, Detroit 1936

Gelatin silver print

Credit line: Cantor Arts Center Collection, The Capital Group Foundation
Photography Collection at Stanford University

Accession no.: 2019.44.20



For more information contact: Margaret Whitehorn, Public Relations Assistant Manager,
Cantor Arts Center at Stanford University, Lomita Dr. at Museum Way, Stanford, CA
94305, 650-724-3600, mmwhite@stanford.edu, museum.stanford.edu

**Cantor Arts Center
at Stanford University**

**Reality Makes Them Dream: American Photography, 1929–1941
Final Checklist
March 29, 2023–July 30, 2023**

John Gutmann, American, born in Germany, 1905–1998
Class, Olympic High Diving Champion, Marjorie Gestring 1937
Gelatin silver print
Credit line: Cantor Arts Center Collection, The Capital Group Foundation
Photography Collection at Stanford University
Accession no.: 2019.44.23



John Gutmann, American, born in Germany, 1905–1998
Monster on Broadway, New York City 1936
Gelatin silver print
Credit line: Cantor Arts Center Collection, The Capital Group Foundation
Photography Collection at Stanford University
Accession no.: 2019.44.25



John Gutmann, American, born in Germany, 1905–1998
Monument to the Chicken Center of the World, Petaluma, California 1936
Gelatin silver print
Credit line: Cantor Arts Center Collection, The Capital Group Foundation
Photography Collection at Stanford University
Accession no.: 2019.44.26



For more information contact: Margaret Whitehorn, Public Relations Assistant Manager,
Cantor Arts Center at Stanford University, Lomita Dr. at Museum Way, Stanford, CA
94305, 650-724-3600, mmwhite@stanford.edu, museum.stanford.edu

**Cantor Arts Center
at Stanford University**

**Reality Makes Them Dream: American Photography, 1929–1941
Final Checklist
March 29, 2023–July 30, 2023**

John Gutmann, American, born in Germany, 1905–1998

Oakies on Their Way West, Laramie, Wyoming 1936

Gelatin silver print

Credit line: Cantor Arts Center Collection, The Capital Group Foundation
Photography Collection at Stanford University

Accession no.: 2019.44.27



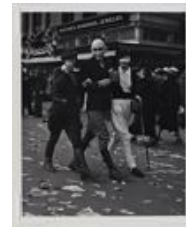
John Gutmann, American, born in Germany, 1905–1998

The Game, New Orleans 1937

Gelatin silver print

Credit line: Cantor Arts Center Collection, The Capital Group Foundation
Photography Collection at Stanford University

Accession no.: 2019.44.37



John Gutmann, American, born in Germany, 1905–1998

"Lost What," San Francisco 1938

Gelatin silver print

Credit line: Cantor Arts Center Collection, The Capital Group Foundation
Photography Collection at Stanford University

Accession no.: 2019.44.40



For more information contact: Margaret Whitehorn, Public Relations Assistant Manager,
Cantor Arts Center at Stanford University, Lomita Dr. at Museum Way, Stanford, CA
94305, 650-724-3600, mmwhite@stanford.edu, museum.stanford.edu

**Cantor Arts Center
at Stanford University**

**Reality Makes Them Dream: American Photography, 1929–1941
Final Checklist
March 29, 2023–July 30, 2023**

John Gutmann, American, born in Germany, 1905–1998

The Open Window, Philadelphia 1939

Gelatin silver print

Credit line: Cantor Arts Center Collection, The Capital Group Foundation
Photography Collection at Stanford University

Accession no.: 2019.44.61



Helen Levitt, American, 1913–2009

New York c. 1938

Gelatin silver print

Credit line: Cantor Arts Center Collection, The Capital Group Foundation
Photography Collection at Stanford University

Accession no.: 2019.45.1



Helen Levitt, American, 1913–2009

New York c. 1938

Gelatin silver print

Credit line: Cantor Arts Center Collection, The Capital Group Foundation
Photography Collection at Stanford University

Accession no.: 2019.45.2



For more information contact: Margaret Whitehorn, Public Relations Assistant Manager,
Cantor Arts Center at Stanford University, Lomita Dr. at Museum Way, Stanford, CA
94305, 650-724-3600, mmwhite@stanford.edu, museum.stanford.edu

**Cantor Arts Center
at Stanford University**

**Reality Makes Them Dream: American Photography, 1929–1941
Final Checklist
March 29, 2023–July 30, 2023**

Helen Levitt, American, 1913–2009

New York c. 1940

Gelatin silver print

Credit line: Cantor Arts Center Collection, The Capital Group Foundation
Photography Collection at Stanford University

Accession no.: 2019.45.4



Helen Levitt, American, 1913–2009

New York c. 1940

Gelatin silver print

Credit line: Cantor Arts Center Collection, The Capital Group Foundation
Photography Collection at Stanford University

Accession no.: 2019.45.10



Helen Levitt, American, 1913–2009

New York c. 1940

Gelatin silver print

Credit line: Cantor Arts Center Collection, The Capital Group Foundation
Photography Collection at Stanford University

Accession no.: 2019.45.12



For more information contact: Margaret Whitehorn, Public Relations Assistant Manager,
Cantor Arts Center at Stanford University, Lomita Dr. at Museum Way, Stanford, CA
94305, 650-724-3600, mmwhite@stanford.edu, museum.stanford.edu

**Cantor Arts Center
at Stanford University**

**Reality Makes Them Dream: American Photography, 1929–1941
Final Checklist
March 29, 2023–July 30, 2023**

Helen Levitt, American, 1913–2009

New York c. 1940

Gelatin silver print

Credit line: Cantor Arts Center Collection, The Capital Group Foundation
Photography Collection at Stanford University

Accession no.: 2019.45.20



Helen Levitt, American, 1913–2009

New York c. 1940

Gelatin silver print

Credit line: Cantor Arts Center Collection, The Capital Group Foundation
Photography Collection at Stanford University

Accession no.: 2019.45.24



Wright Morris, American, 1910–1998

Adobe with Corn 1940

Gelatin silver print

Credit line: Cantor Arts Center Collection, The Capital Group Foundation
Photography Collection at Stanford University

Accession no.: 2019.46.6



For more information contact: Margaret Whitehorn, Public Relations Assistant Manager,
Cantor Arts Center at Stanford University, Lomita Dr. at Museum Way, Stanford, CA
94305, 650-724-3600, mmwhite@stanford.edu, museum.stanford.edu

**Cantor Arts Center
at Stanford University**

**Reality Makes Them Dream: American Photography, 1929–1941
Final Checklist
March 29, 2023–July 30, 2023**

Wright Morris, American, 1910–1998

Faulkner Country, near Oxford, Mississippi 1940

Gelatin silver print

Credit line: Cantor Arts Center Collection, The Capital Group Foundation
Photography Collection at Stanford University

Accession no.: 2019.46.11



Wright Morris, American, 1910–1998

Gano Grain Elevator, Western Kansas 1940

Gelatin silver print

Credit line: Cantor Arts Center Collection, The Capital Group Foundation
Photography Collection at Stanford University

Accession no.: 2019.46.12



Wright Morris, American, 1910–1998

Powerhouse and Palm Tree, near Lordsburg, New Mexico 1940

Gelatin silver print

Credit line: Cantor Arts Center Collection, The Capital Group Foundation
Photography Collection at Stanford University

Accession no.: 2019.46.13



For more information contact: Margaret Whitehorn, Public Relations Assistant Manager,
Cantor Arts Center at Stanford University, Lomita Dr. at Museum Way, Stanford, CA
94305, 650-724-3600, mmwhite@stanford.edu, museum.stanford.edu

**Cantor Arts Center
at Stanford University**

**Reality Makes Them Dream: American Photography, 1929–1941
Final Checklist
March 29, 2023–July 30, 2023**

Wright Morris, American, 1910–1998

House in Winter, Near Lincoln, Nebraska 1941

Gelatin silver print

Credit line: Cantor Arts Center Collection, The Capital Group Foundation
Photography Collection at Stanford University

Accession no.: 2019.46.20



Gordon Parks, American, 1912–2006

Langston Hughes, Chicago, Illinois, 1941 1941

Gelatin silver print

Credit line: Cantor Arts Center Collection, The Capital Group Foundation
Photography Collection at Stanford University

Accession no.: 2019.47.1



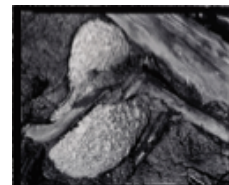
Edward Weston, American, 1911–1993

Cypress Root and Rock, Seventeen Mile Drive 1929

Gelatin silver print

Credit line: Cantor Arts Center Collection, The Capital Group Foundation
Photography Collection at Stanford University

Accession no.: 2019.48.55



For more information contact: Margaret Whitehorn, Public Relations Assistant Manager,
Cantor Arts Center at Stanford University, Lomita Dr. at Museum Way, Stanford, CA
94305, 650-724-3600, mmwhite@stanford.edu, museum.stanford.edu

**Cantor Arts Center
at Stanford University**

**Reality Makes Them Dream: American Photography, 1929–1941
Final Checklist
March 29, 2023–July 30, 2023**

Edward Weston, American, 1911–1993

Bedpan 1930

Gelatin silver print

Credit line: Cantor Arts Center Collection, The Capital Group Foundation
Photography Collection at Stanford University

Accession no.: 2019.48.69



Edward Weston, American, 1911–1993

Egg Slicer 1930

Gelatin silver print

Credit line: Cantor Arts Center Collection, The Capital Group Foundation
Photography Collection at Stanford University

Accession no.: 2019.48.77



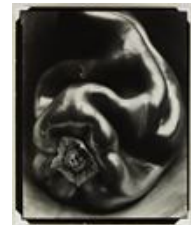
Edward Weston, American, 1911–1993

Pepper No. 35 1930

Gelatin silver print

Credit line: Cantor Arts Center Collection, The Capital Group Foundation
Photography Collection at Stanford University

Accession no.: 2019.48.90



For more information contact: Margaret Whitehorn, Public Relations Assistant Manager,
Cantor Arts Center at Stanford University, Lomita Dr. at Museum Way, Stanford, CA
94305, 650-724-3600, mmwhite@stanford.edu, museum.stanford.edu

**Cantor Arts Center
at Stanford University**

**Reality Makes Them Dream: American Photography, 1929–1941
Final Checklist
March 29, 2023–July 30, 2023**

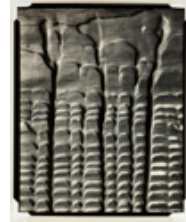
Edward Weston, American, 1911–1993

Eroded Plank from Barley Sifter 1931

Gelatin silver print

Credit line: Cantor Arts Center Collection, The Capital Group Foundation
Photography Collection at Stanford University

Accession no.: 2019.48.109



Edward Weston, American, 1911–1993

Nude (Sibyl) 1933

Gelatin silver print

Credit line: Cantor Arts Center Collection, The Capital Group Foundation
Photography Collection at Stanford University

Accession no.: 2019.48.137



Edward Weston, American, 1911–1993

Cement Worker's Glove 1936

Gelatin silver print

Credit line: Cantor Arts Center Collection, The Capital Group Foundation
Photography Collection at Stanford University

Accession no.: 2019.48.238



For more information contact: Margaret Whitehorn, Public Relations Assistant Manager,
Cantor Arts Center at Stanford University, Lomita Dr. at Museum Way, Stanford, CA
94305, 650-724-3600, mmwhite@stanford.edu, museum.stanford.edu

**Cantor Arts Center
at Stanford University**

**Reality Makes Them Dream: American Photography, 1929–1941
Final Checklist
March 29, 2023–July 30, 2023**

Edward Weston, American, 1911–1993

Dead Man, Colorado Desert 1937

Gelatin silver print

Credit line: Cantor Arts Center Collection, The Capital Group Foundation
Photography Collection at Stanford University

Accession no.: 2019.48.269



Edward Weston, American, 1911–1993

Nude (Charis) Floating 1939

Gelatin silver print

Credit line: Cantor Arts Center Collection, The Capital Group Foundation
Photography Collection at Stanford University

Accession no.: 2019.48.323



Edward Weston, American, 1911–1993

Wedding Cake House, Kennebunkport, Maine 1941

Gelatin silver print

Credit line: Cantor Arts Center Collection, The Capital Group Foundation
Photography Collection at Stanford University

Accession no.: 2019.48.342



For more information contact: Margaret Whitehorn, Public Relations Assistant Manager,
Cantor Arts Center at Stanford University, Lomita Dr. at Museum Way, Stanford, CA
94305, 650-724-3600, mmwhite@stanford.edu, museum.stanford.edu

**Cantor Arts Center
at Stanford University**

**Reality Makes Them Dream: American Photography, 1929–1941
Final Checklist
March 29, 2023–July 30, 2023**

Chao-Chen Yang, American, born in China, 1909–1969

Chief Owasippe 1939

Gelatin silver print

Credit line: Cantor Arts Center Collection, The Michael Donald Brown Collection,
made possible by the William Alden Campbell and Martha Campbell
Art Acquisition Fund and the Asian American Art Initiative
Acquisitions Fund

Accession no.: 2020.156



Walker Evans, American, 1903–1975

Breakfast Room at Belle Grove Plantation, White Chapel, Louisiana 1935

Gelatin silver print

Credit line: Cantor Arts Center Collection, Gift of Dr. J. Patrick and Patricia A.
Kennedy

Accession no.: 2021.118



Walker Evans, American, 1903–1975

Country Church near Beaufort, S.C. 1935

Gelatin silver print

Credit line: Cantor Arts Center Collection, Gift of Dr. J. Patrick and Patricia A.
Kennedy

Accession no.: 2021.119



For more information contact: Margaret Whitehorn, Public Relations Assistant Manager,
Cantor Arts Center at Stanford University, Lomita Dr. at Museum Way, Stanford, CA
94305, 650-724-3600, mmwhite@stanford.edu, museum.stanford.edu

Cantor Arts Center at Stanford University

Reality Makes Them Dream: American Photography, 1929–1941 Final Checklist March 29, 2023–July 30, 2023

Walker Evans, American, 1903–1975

Corrugated Tin Façade 1936

Gelatin silver print on Portriga Rapid paper

Credit line: Cantor Arts Center Collection, Gift of Dr. J. Patrick and Patricia A. Kennedy

Accession no.: 2021.120



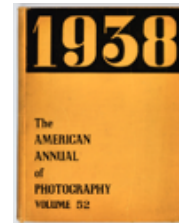
Kyo Koike. Japanese and American, 1878–1947

Castle Towers, 1933, in American Annual of Photography 1938 (Volume 52) 1937

Bound book with 370 pages

Credit line: Cantor Arts Center Collection, Robert E. and Mary B. P. Gross Fund

Accession no.: 2022.37



Hansel Mieth, German, 1909–1998

Garment Workers at Play, 1938, in LIFE Magazine (Volume 5, No. 5, August 1, 1938) 1938

Halftone in magazine

Credit line: Cantor Arts Center Collection, Robert E. and Mary B. P. Gross Fund

Accession no.: 2022.38.1



Toni Frissell, American, 1907–1988

Untitled, 1941, in Vogue Magazine (No. 1, July 1, 1941) 1941

Lithograph in magazine

Credit line: Cantor Arts Center Collection, Robert E. and Mary B. P. Gross Fund

Accession no.: 2022.40



For more information contact: Margaret Whitehorn, Public Relations Assistant Manager,
Cantor Arts Center at Stanford University, Lomita Dr. at Museum Way, Stanford, CA
94305, 650-724-3600, mmwhite@stanford.edu, museum.stanford.edu

**Cantor Arts Center
at Stanford University**

**Reality Makes Them Dream: American Photography, 1929–1941
Final Checklist
March 29, 2023–July 30, 2023**

Seema Weatherwax, American, born Russia, 1905–2006

Untitled c. 1938-40

Gelatin silver contact print

Credit line: Courtesy of Department of Special Collections, Stanford Libraries

Accession no.: L.6.1.2022



Seema Weatherwax, American, born Russia, 1905–2006

Untitled c. 1938-40

Gelatin silver contact print

Credit line: Courtesy of Department of Special Collections, Stanford Libraries

Accession no.: L.6.2.2022



Seema Weatherwax, American, born Russia, 1905–2006

Untitled c. 1938-40

Gelatin silver contact print

Credit line: Courtesy of Department of Special Collections, Stanford Libraries

Accession no.: L.6.3.2022



Seema Weatherwax, American, born Russia, 1905–2006

Untitled c. 1938-40

Gelatin silver contact print

Credit line: Courtesy of Department of Special Collections, Stanford Libraries

Accession no.: L.6.4.2022



For more information contact: Margaret Whitehorn, Public Relations Assistant Manager,
Cantor Arts Center at Stanford University, Lomita Dr. at Museum Way, Stanford, CA
94305, 650-724-3600, mmwhite@stanford.edu, museum.stanford.edu

**Cantor Arts Center
at Stanford University**

**Reality Makes Them Dream: American Photography, 1929–1941
Final Checklist
March 29, 2023–July 30, 2023**

Seema Weatherwax, American, born Russia, 1905–2006

Untitled c. 1938-40

Gelatin silver contact print

Credit line: Courtesy of Department of Special Collections, Stanford Libraries

Accession no.: L.6.5.2022



Seema Weatherwax, American, born Russia, 1905–2006

Untitled c. 1938-40

Gelatin silver contact print

Credit line: Courtesy of Department of Special Collections, Stanford Libraries

Accession no.: L.6.6.2022



Seema Weatherwax, American, born Russia, 1905–2006

Yosemite 1940

Gelatin silver print

Credit line: Courtesy of Department of Special Collections, Stanford Libraries

Accession no.: L.6.7.2022



Seema Weatherwax, American, born Russia, 1905–2006

"Shopping Center" Outside of Migrant Camp Grounds 1941

Gelatin silver print

Credit line: Courtesy of Department of Special Collections, Stanford Libraries

Accession no.: L.6.8.2022



For more information contact: Margaret Whitehorn, Public Relations Assistant Manager,
Cantor Arts Center at Stanford University, Lomita Dr. at Museum Way, Stanford, CA
94305, 650-724-3600, mmwhite@stanford.edu, museum.stanford.edu

**Cantor Arts Center
at Stanford University**

**Reality Makes Them Dream: American Photography, 1929–1941
Final Checklist
March 29, 2023–July 30, 2023**

Bradford Washburn, American, 1910-2007

Mount La Perouse c. 1933

Gelatin silver print

Credit line: Courtesy of Department of Special Collections, Stanford Libraries

Accession no.: L.6.9.2022



Herbert Matter, Swiss and American, 1907–1984

Untitled c. 1940

Gelatin silver print

Credit line: Courtesy of Department of Special Collections, Stanford Libraries

Accession no.: L.6.10.2022



Henry P. Schmidt, American, 1878–1966

San Luis Rey, 1798 1939–1941

Gelatin silver print

Credit line: Courtesy of Department of Special Collections, Stanford Libraries

Accession no.: L.6.11.2022



Carl Mydans, American, 1907-2004

Washington, D.C. near Capitol 1935

Gelatin silver print

Credit line: Courtesy of Department of Special Collections, Stanford Libraries

Accession no.: L.6.12.2022



For more information contact: Margaret Whitehorn, Public Relations Assistant Manager,
Cantor Arts Center at Stanford University, Lomita Dr. at Museum Way, Stanford, CA
94305, 650-724-3600, mmwhite@stanford.edu, museum.stanford.edu

**Cantor Arts Center
at Stanford University**

**Reality Makes Them Dream: American Photography, 1929–1941
Final Checklist
March 29, 2023–July 30, 2023**

Unknown photographer

Untitled photographs, c. 1932, in *Modern Classics* by Tony Sansone (1932)
Halftones in bound book

Credit line: Courtesy of Department of Special Collections, Stanford Libraries

Accession no.: L.6.13.2022



Ansel Adams, American, 1902–1984

Boards and Thistles, 1932, in *Making a Photograph: An Introduction to Photography* (1935)

Letterpress halftone in bound book

Credit line: Courtesy of Department of Special Collections, Stanford Libraries

Accession no.: L.6.14.2022



Sibyl Anikeef, American, 1896–1997

Cannery Roofs, c. 1939; Monterey Boat Works, c. 1939, in *U.S. Camera 1939*

Nancy Wynne Newhall, American, 1908–1974

Street Diggers, c. 1939, in *U.S. Camera 1939*

Photogravures in bound periodical

Credit line: Courtesy of Stanford University Libraries

Accession no.: L.7.1.2022



Laura Gilpin, American, 1891–1979

Acoma Pueblo, 1939; Acoma Mesa, 1939, in *The Pueblos: A Camera Chronicle* by Laura Gilpin (1941)

Photogravure in bound book

Credit line: Courtesy of Stanford University Libraries

Accession no.: L.7.2.2022



For more information contact: Margaret Whitehorn, Public Relations Assistant Manager,
Cantor Arts Center at Stanford University, Lomita Dr. at Museum Way, Stanford, CA
94305, 650-724-3600, mmwhite@stanford.edu, museum.stanford.edu

Cantor Arts Center at Stanford University

Reality Makes Them Dream: American Photography, 1929–1941 Final Checklist March 29, 2023–July 30, 2023

Lewis Wickes Hine, American, 1874–1940
Untitled photographs, 1930, in *Metropolis: An American City in Photographs*
by Agnes Rogers and Frederick Lewis Allen (1934)
Halftones in bound book
Credit line: Courtesy of Stanford University Libraries
Accession no.: L.7.3.2022



Helen M. Post, American, 1907–1978
**Flathead Indian at work on power lines, c. 1940; Flathead Indian electrician
threading pipe, c. 1940**, in *As Long as the Grass Shall Grow* by Oliver La Farge (1940)
Halftone in bound book
Credit line: Courtesy of Stanford University Libraries
Accession no.: L.7.4.2022



Nell Dorr, American, 1893–1988
Night Blooming Cereus, c. 1930, in *Mangroves: Verse and Photographs* (1933)
Photographic reproduction in bound book
Credit line: Bowes Art & Architecture Library
Accession no.: L.8.1.2022



Unknown photographer
Untitled, c. 1938, in *The River* by Pare Lorentz (1938)
Photomechanical reproduction in bound book
Credit line: Bowes Art & Architecture Library
Accession no.: L.8.2.2022



For more information contact: Margaret Whitehorn, Public Relations Assistant Manager,
Cantor Arts Center at Stanford University, Lomita Dr. at Museum Way, Stanford, CA
94305, 650-724-3600, mmwhite@stanford.edu, museum.stanford.edu

**Cantor Arts Center
at Stanford University**

**Reality Makes Them Dream: American Photography, 1929–1941
Final Checklist
March 29, 2023–July 30, 2023**

Paul Outerbridge, American, 1896–1958
Avocado Pears, 1936, in *Photographing in Color* (1940)
Photogravure in bound book
Credit line: Bowes Art & Architecture Library
Accession no.: L.8.3.2022



Marion Post Wolcott, American, 1910–1990
Plowing Cotton, Georgia, 1939, in *12 Million Black Voices: A Folk History of the Negro in the United States* by Richard Wright (1941)
Halftone in bound book
Credit line: Bowes Art & Architecture Library
Accession no.: L.8.4.2022



Anne W. Brigman, American, 1869–1950
Nocturne 1937
Gelatin silver print
Credit line: San Francisco Museum of Modern Art, Gift of Robert Durden
Accession no.: L.9.1.2022



Imogen Cunningham, American, 1883–1976
Junk 1934
Gelatin silver print
Credit line: San Francisco Museum of Modern Art, The Henry Swift Collection,
gift of Florence Alston Swift
Accession no.: L.9.2.2022

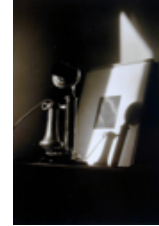


For more information contact: Margaret Whitehorn, Public Relations Assistant Manager,
Cantor Arts Center at Stanford University, Lomita Dr. at Museum Way, Stanford, CA
94305, 650-724-3600, mmwhite@stanford.edu, museum.stanford.edu

**Cantor Arts Center
at Stanford University**

**Reality Makes Them Dream: American Photography, 1929–1941
Final Checklist
March 29, 2023–July 30, 2023**

Dorothy Norman, American, 1905–1997
An American Place – Telephone and Alfred Stieglitz Equivalent 1930s
Gelatin silver print
Credit line: San Francisco Museum of Modern Art, Purchase
Accession no.: L.9.3.2022



Sonya Noskowiak, American, born in Germany, 1900–1975
Washing, San Francisco, California 1937
Gelatin silver print
Credit line: San Francisco Museum of Modern Art, The United States General Services Administration, formerly Federal Works Agency, Works Projects Administration (WPA), allocation to the San Francisco Museum of Modern Art
Accession no.: L.9.4.2022



Frederick Sommer, American, born in Italy, 1905–1999
Jack Rabbit 1939
Gelatin silver print
Credit line: San Francisco Museum of Modern Art, Gift of Lisa and John Pritzker
Accession no.: L.9.5.2022



For more information contact: Margaret Whitehorn, Public Relations Assistant Manager,
Cantor Arts Center at Stanford University, Lomita Dr. at Museum Way, Stanford, CA
94305, 650-724-3600, mmwhite@stanford.edu, museum.stanford.edu

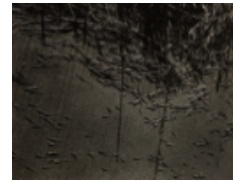
**Cantor Arts Center
at Stanford University**

**Reality Makes Them Dream: American Photography, 1929–1941
Final Checklist
March 29, 2023–July 30, 2023**

Edward Weston, American, 1886–1958
Bananas 1930
Gelatin silver print
Credit line: Dennis and Annie Reed Collection
Accession no.: L.12.1.2021



Hy Hirsh, American, 1912–1961
Untitled late 1930s
Gelatin silver print
Credit line: Dennis and Annie Reed Collection
Accession no.: L.12.2.2021



Shinsaku Izumi, Japanese, active in U.S.A., 1880–1941
The Shadow c. 1931
Gelatin silver print
Credit line: Dennis and Annie Reed Collection
Accession no.: L.12.3.2021



Hiromu Kira, American, 1898–1991
The Thinker c. 1930
Gelatin silver print
Credit line: Dennis and Annie Reed Collection
Accession no.: L.12.4.2021



For more information contact: Margaret Whitehorn, Public Relations Assistant Manager,
Cantor Arts Center at Stanford University, Lomita Dr. at Museum Way, Stanford, CA
94305, 650-724-3600, mmwhite@stanford.edu, museum.stanford.edu

**Cantor Arts Center
at Stanford University**

**Reality Makes Them Dream: American Photography, 1929–1941
Final Checklist
March 29, 2023–July 30, 2023**

Akira Furukawa, American, 1890–1968
Cargo 1929
Bromoil
Credit line: Dennis and Annie Reed Collection
Accession no.: L.12.5.2021



For more information contact: Margaret Whitehorn, Public Relations Assistant Manager,
Cantor Arts Center at Stanford University, Lomita Dr. at Museum Way, Stanford, CA
94305, 650-724-3600, mmwhite@stanford.edu, museum.stanford.edu