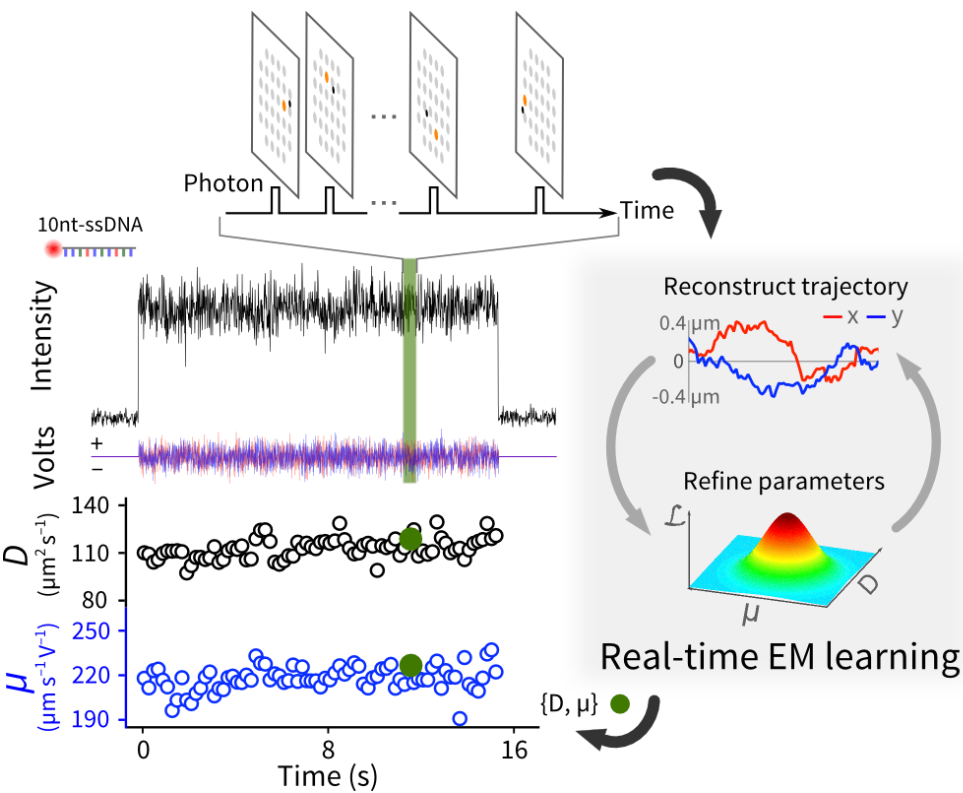
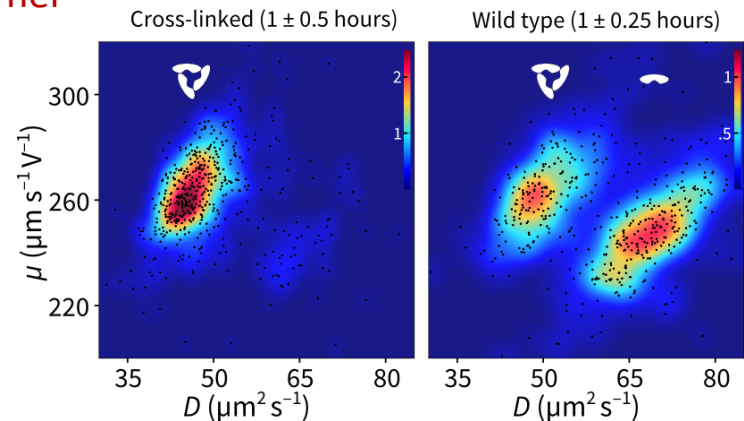


# Monitoring biomolecular interactions in the ABEL trap by time-dependent SM transport coefficients

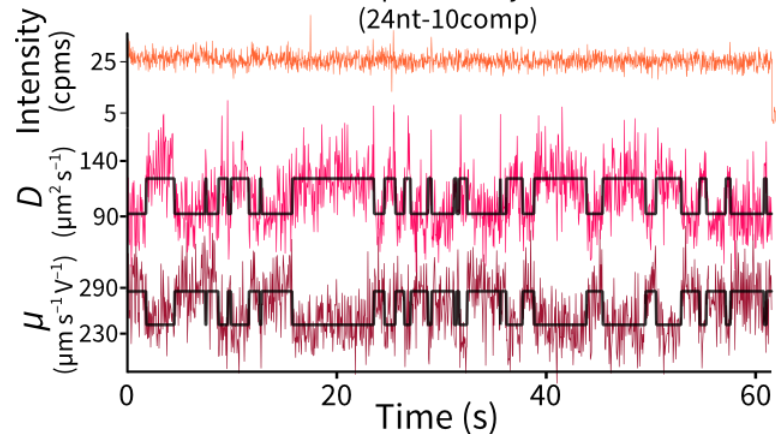
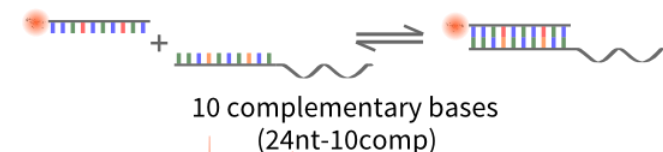
Quan Wang and W. E. Moerner



Statistical analysis of molecular motion in the ABEL trap yields estimates of single-molecule diffusion coefficient ( $D$ ) and electrokinetic mobility ( $\mu$ )



Visualizing allophycocyanin protein dissociation



DNA hybridization/unbinding