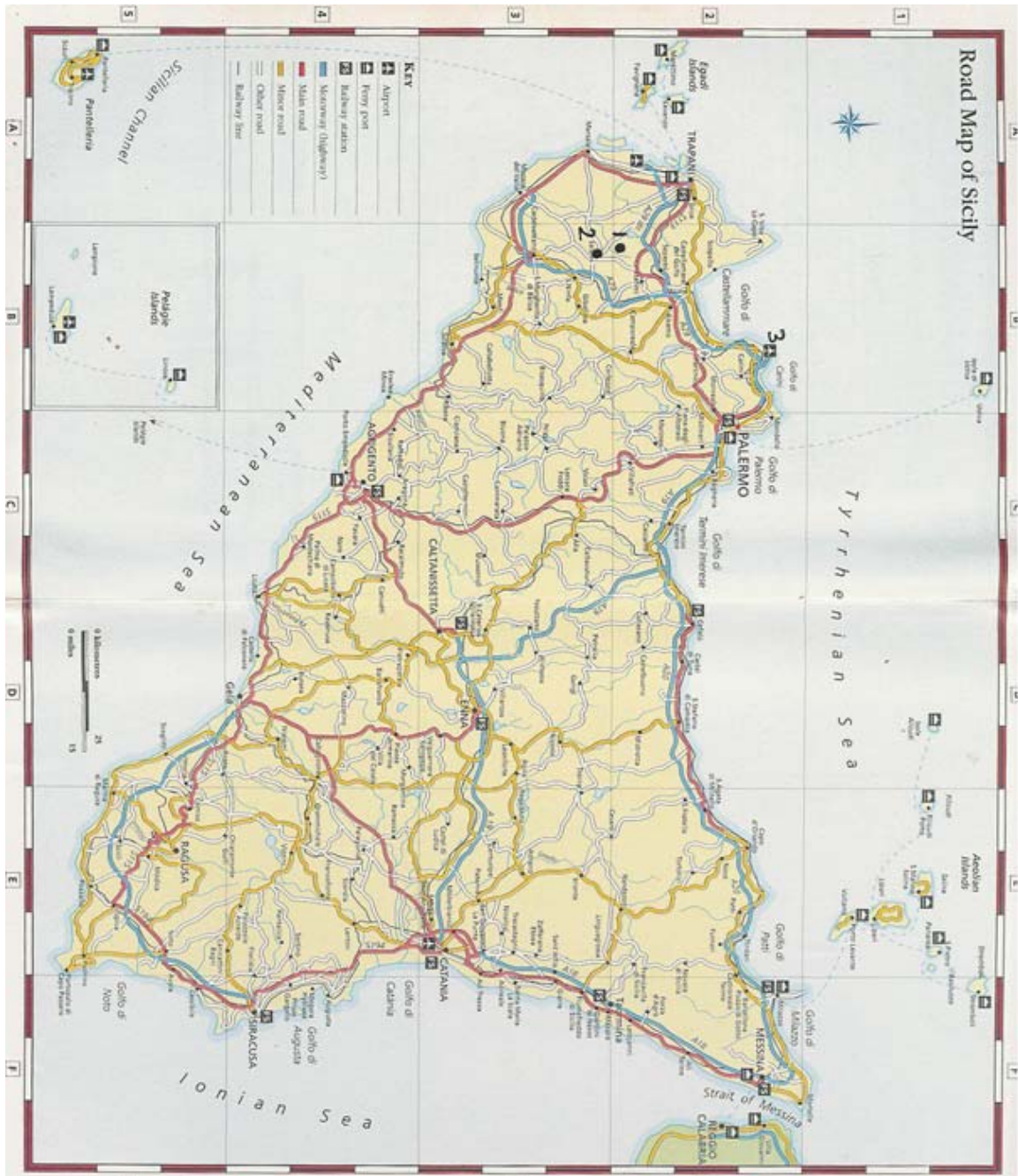


3 Useful maps and plans

Fig. 3.1 Sicily



- 1 Monte Polizzo
- 2 Salemi
- 3 Palermo airport (Falcone-Borsellino/Punta Raisi)



Map of Salemi. Monte Polizzo lies about 5 miles out of town, along the lowest road on the right-hand side of the map

Fig. 3.3 Major ancient sites in western Sicily

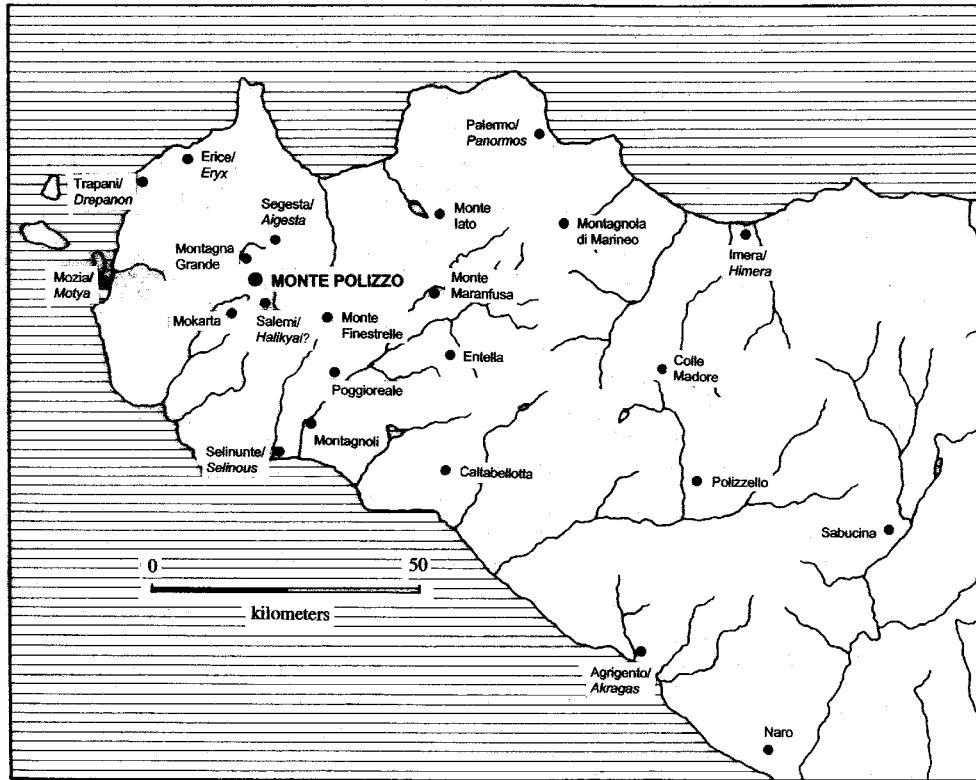


Fig. 3.4 Aerial photograph of Monte Polizzo

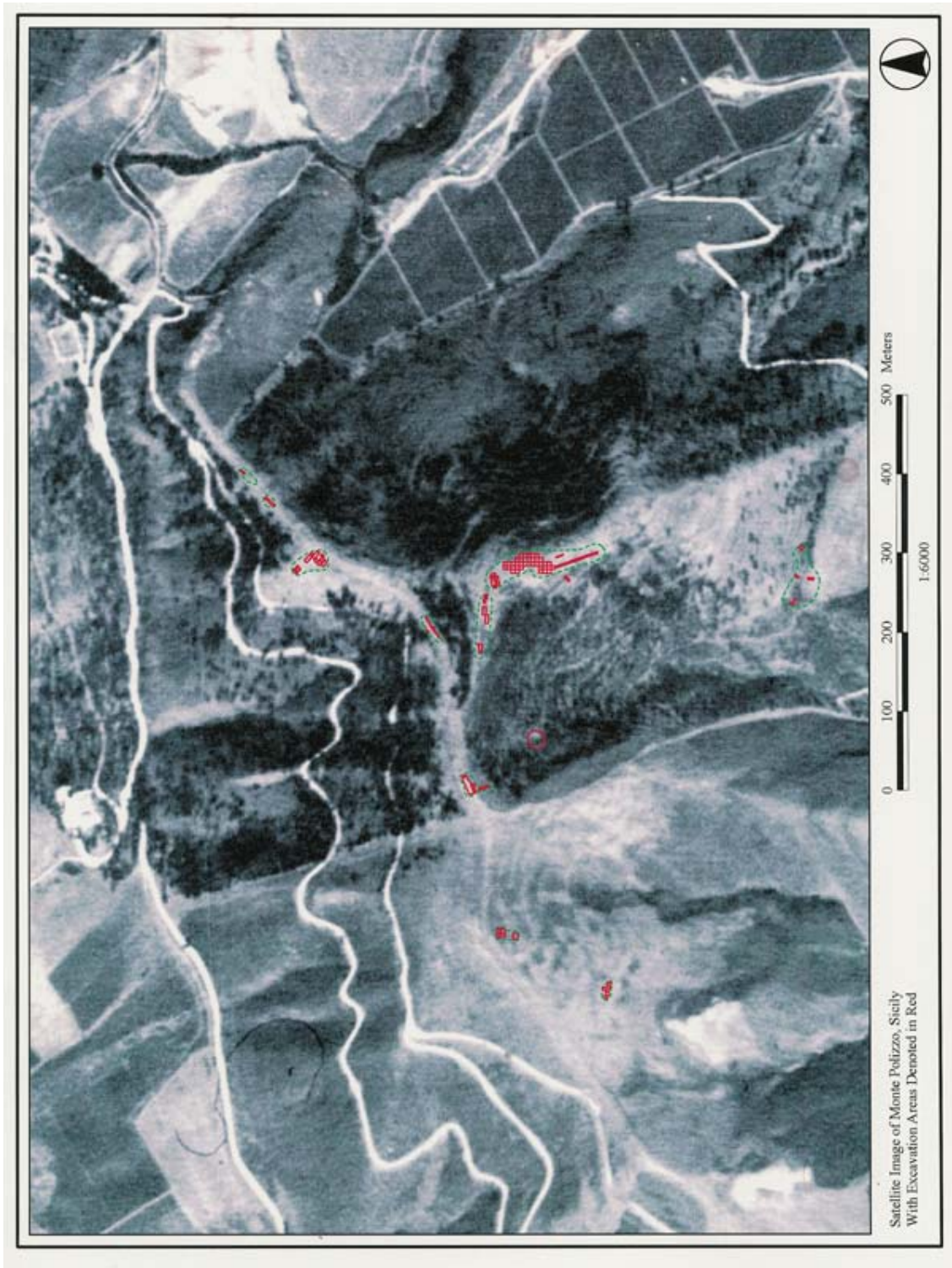


Fig. 3.5 Monte Polizzo site plan (contour interval 20 meters)

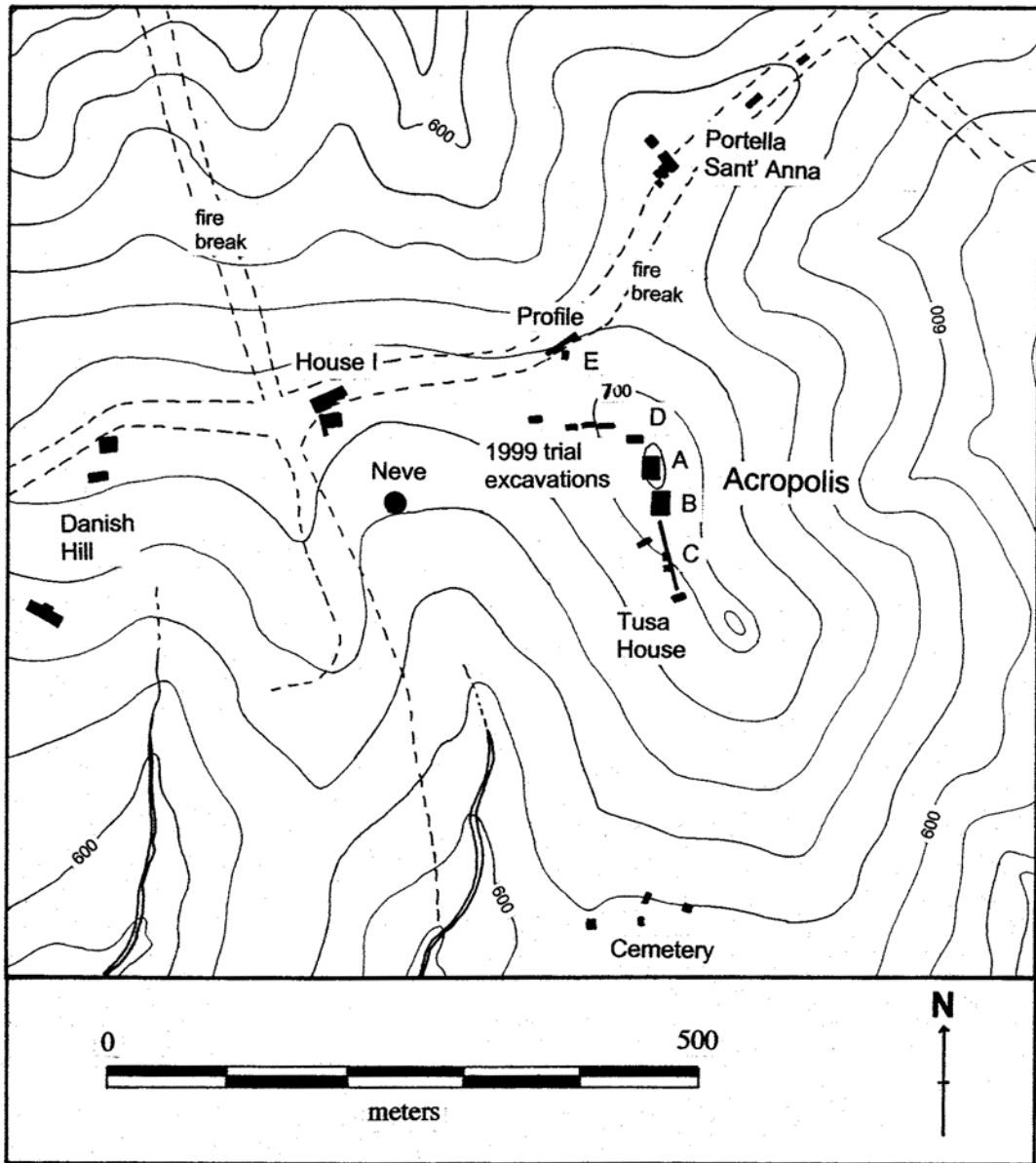


Fig. 3.6 Acropolis plan

Monte Polizzo 2003 Acropolis excavations

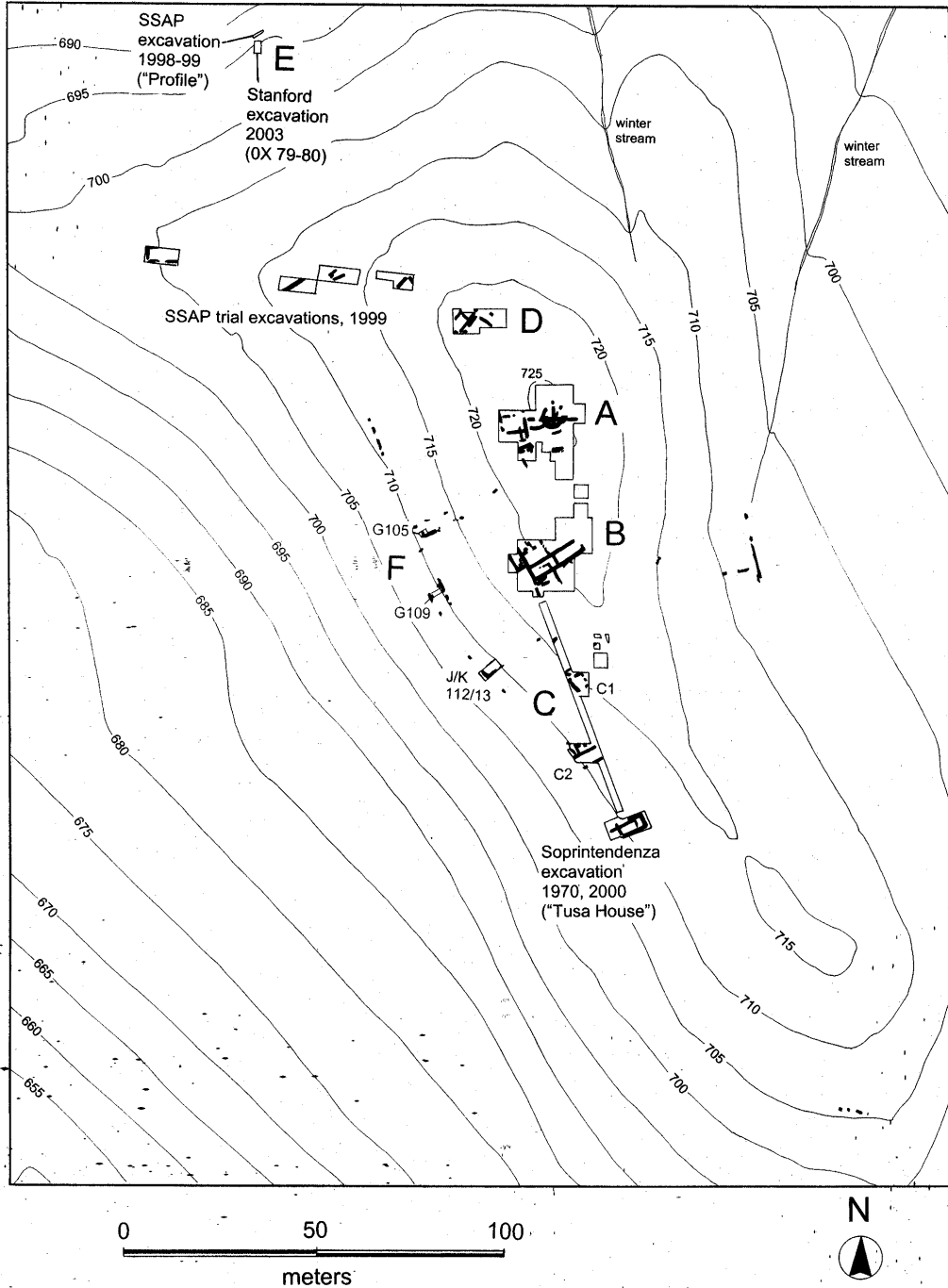


Fig. 3.7 Plan of period II (6th-century-BC) structures in zone A

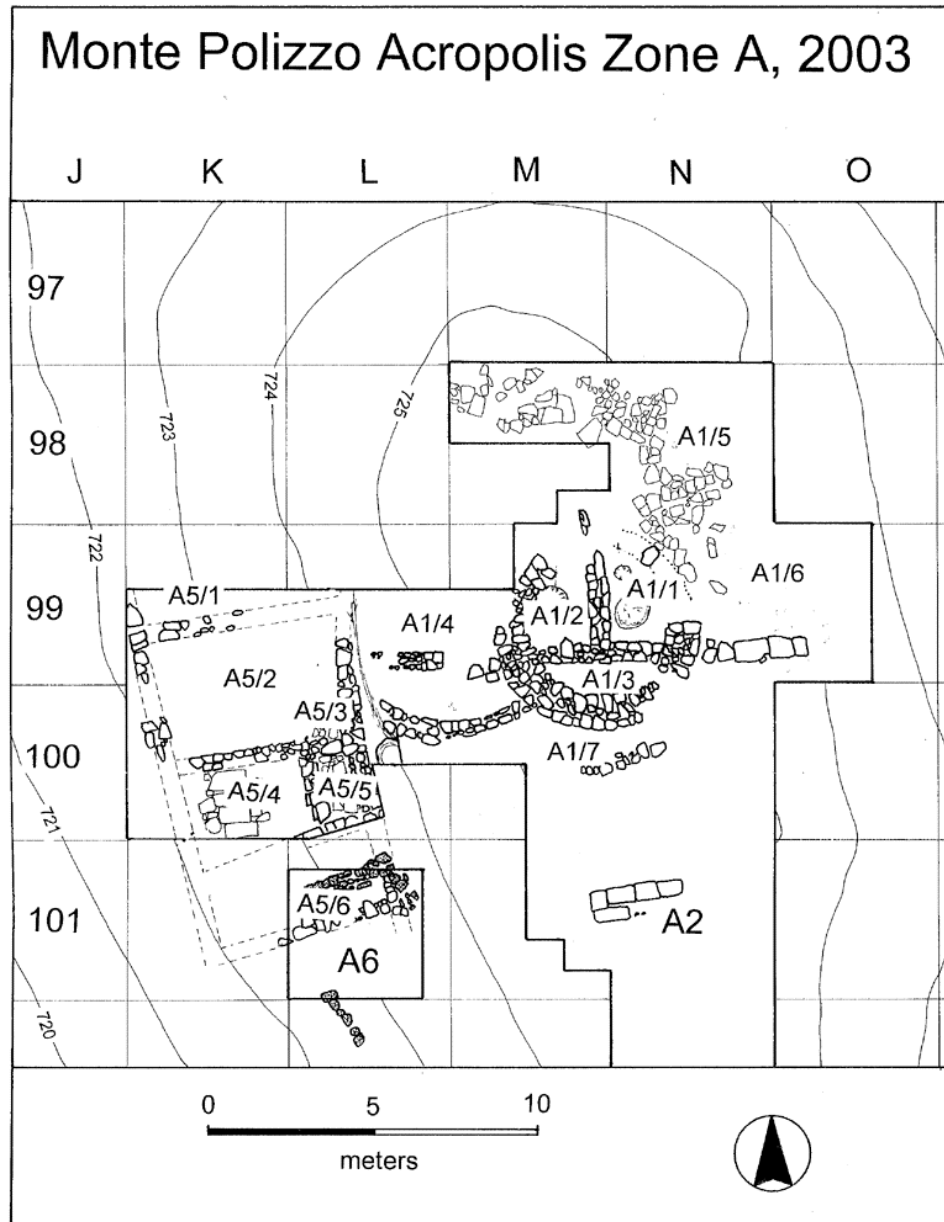


Fig. 3.8 West terrace, Building A5, c. 600-550 BC

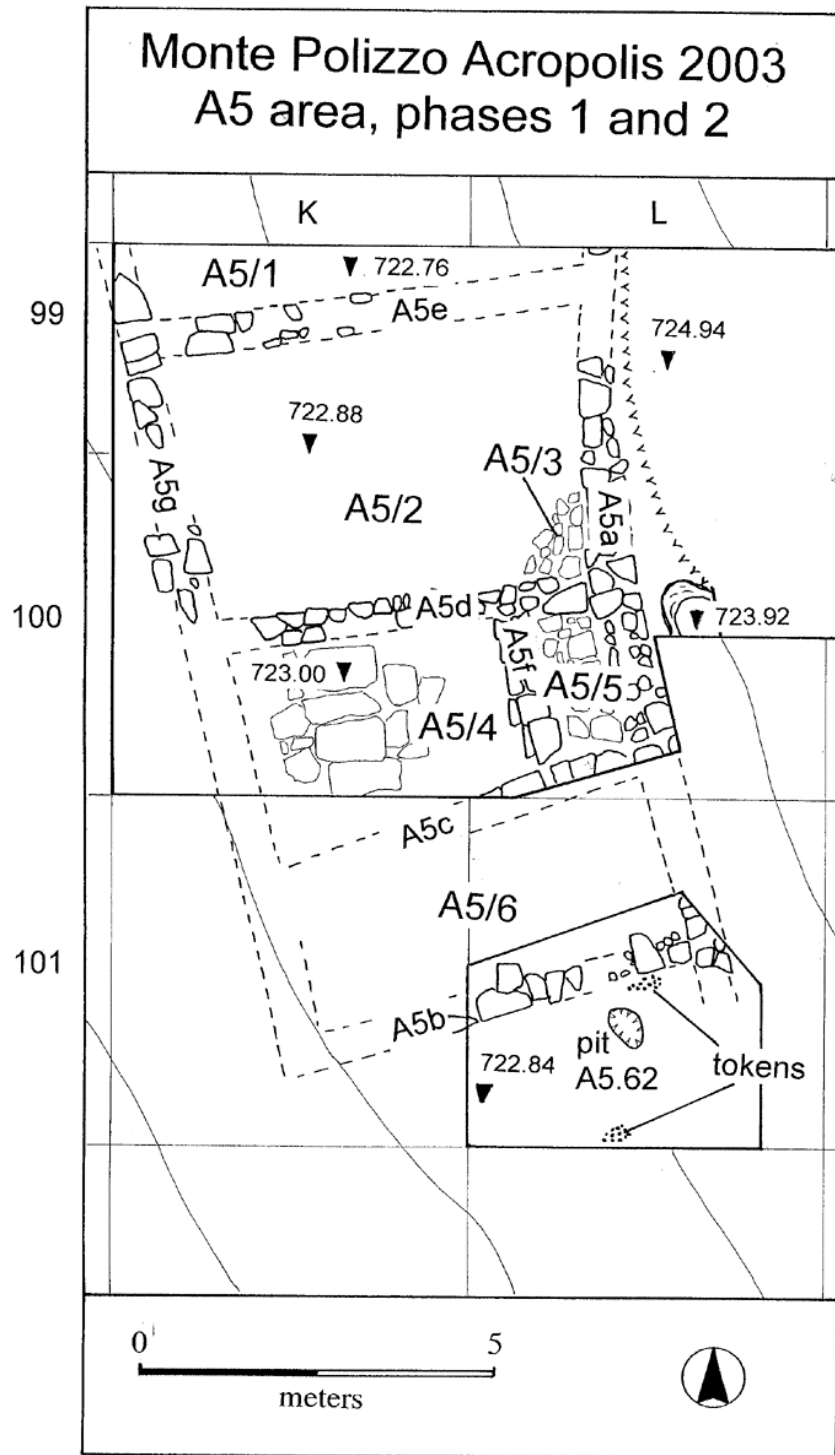


Fig. 3.9 West terrace, c. 550-525 BC