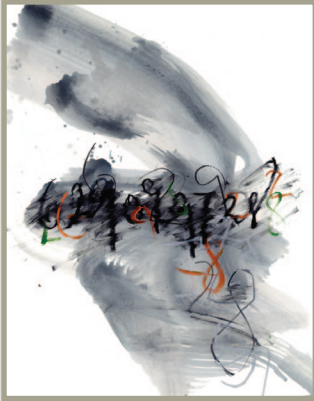
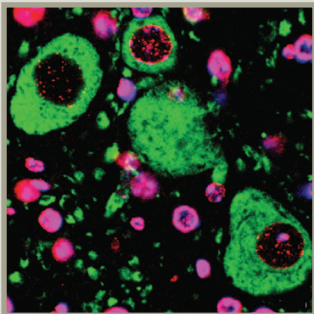


nature neuroscience



In this issue, Wimmer and colleagues investigate the neural basis of temporal decay in working memory precision, based on a computational hypothesis. 'Bump attractor' dynamics explained the relationship between the accuracy of behavioral responses and neuronal activity in the prefrontal cortex of monkeys performing a spatial working memory task. The cover illustrates the gradual decay of a telephone number as it is actively maintained in working memory. Artwork by Óscar Astromujoff (p 431)



Heterochromatin loss in neurodegeneration (pp 334 and 357)

OBITUARY

- 331 Marie Filbin 1955–2014**
Jane Roskams, Mark Tuszynski & Oswald Steward

NEWS AND VIEWS

- 332 What's there, distinctly, when and where?**
Marieke Mur & Nikolaus Kriegeskorte ▶ *see also p 455*
- 334 PIWI L1 protein power targets tau therapy**
Sandra-Fausia Soukup & Patrik Verstreken ▶ *see also p 357*
- 336 Inhaling: endocannabinoids and food intake**
Jaime G Maldonado-Avilés & Ralph J DiLeone ▶ *see also p 407*
- 338 Crouching tiger, hidden dimensions**
Terence D Sanger & John F Kalaska ▶ *see also p 440*
- 340 Oxytocin for all senses**
Jean Mary Zarate ▶ *see also p 391*

PERSPECTIVE

- 341 Neurobiology of premature brain injury**
Natalina Salmaso, Beata Jablonska, Joseph Scafidi, Flora M Vaccarino & Vittorio Gallo

REVIEW

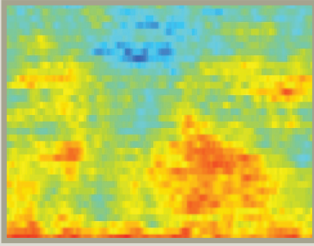
- 347 Changing concepts of working memory**
Wei Ji Ma, Masud Husain & Paul M Bays

ARTICLES

- 357 Tau promotes neurodegeneration through global chromatin relaxation**
B Frost, M Hemberg, J Lewis & M B Feany ▶ *see also p 334*
- 367 LRRK2 regulates synaptogenesis and dopamine receptor activation through modulation of PKA activity**
L Parisiadou, J Yu, C Sgobio, C Xie, G Liu, L Sun, X-L Gu, X Lin, N A Crowley, D M Lovinger & H Cai
- 377 Circadian behavior is light-reprogrammed by plastic DNA methylation**
A Azzi, R Dallmann, A Casserly, H Rehrauer, A Patrignani, B Maier, A Kramer & S A Brown
- 383 NMDA spikes enhance action potential generation during sensory input**
L M Palmer, A S Shai, J E Reeve, H L Anderson, O Paulsen & M E Larkum



nature publishing group



Microglia contribute to social behavior (p 400)



Mechanism for self-sensory cancellation (p 416)



Preparatory activity without movement (pp 338 and 440)

- 391 Oxytocin mediates early experience-dependent cross-modal plasticity in the sensory cortices**
J-J Zheng, S-J Li, X-D Zhang, W-Y Miao, D Zhang, H Yao & X Yu ▶ *see also p 340*
- 400 Deficient neuron-microglia signaling results in impaired functional brain connectivity and social behavior**
Y Zhan, R C Paolicelli, F Sforzini, L Weinhard, G Bolasco, F Pagani, A L Vyssotski, A Bifone, A Gozzi, D Ragozzino & C T Gross
- 407 The endocannabinoid system controls food intake via olfactory processes**
E Soria-Gómez, L Bellocchio, L Reguero, G Lepousez, C Martin, M Bendahmane, S Ruehle, F Remmers, T Desprez, I Matias, T Wiesner, A Cannich, A Nissant, A Wadleigh, H-C Pape, A P Chiarlone, C Quarta, D Verrier, P Vincent, F Massa, B Lutz, M Guzmán, H Gurden, G Ferreira, P-M Lledo, P Grandes & G Marsicano ▶ *see also p 336*
- 416 A temporal basis for predicting the sensory consequences of motor commands in an electric fish**
A Kennedy, G Wayne, P Kaifosh, K Alviña, L F Abbott & N B Sawtell
- 423 Basal ganglia subcircuits distinctively encode the parsing and concatenation of action sequences**
X Jin, F Tecuapetla & R M Costa
- 431 Bump attractor dynamics in prefrontal cortex explains behavioral precision in spatial working memory**
K Wimmer, D Q Nykamp, C Constantinidis & A Compte
- 440 Cortical activity in the null space: permitting preparation without movement**
M T Kaufman, M M Churchland, S I Ryu & K V Shenoy ▶ *see also p 338*
- 449 Imagined gait modulates neuronal network dynamics in the human pedunculopontine nucleus**
T L Tattersall, P G Stratton, T J Coyne, R Cook, P Silberstein, P A Silburn, F Windels & P Sah
- 455 Resolving human object recognition in space and time**
R M Cichy, D Pantazis & A Oliva ▶ *see also p 332*
- 463 A neural mechanism underlying failure of optimal choice with multiple alternatives**
B K H Chau, N Kolling, L T Hunt, M E Walton & M F S Rushworth

TECHNICAL REPORT

- 471 Rapid and reversible knockdown of endogenous proteins by peptide-directed lysosomal degradation**
X Fan, W Y Jin, J Lu, J Wang & Y T Wang

NATURE NEUROSCIENCE CLASSIFIED

See back pages.